

SERVICE IDEAS

PRODUCT BOOK



BUFFET | AIRPOTS | SERVERS | TABLETOP

HOW TO USE THIS CATALOG

HELPFUL SYMBOLS



1-2 Hours
Hot



Over 8
Hours Cold



5 Year
Warranty



Custom
Wrapping



2-3 Hours
Hot



Over 12
Hours Cold



SI Exclusive
Item



Custom
Print



4-6 Hours
Hot



Hand Wash
Only



NSF Listed



Hydro
Dipping



6-8 Hours
Hot



Dishwasher
Safe



Anti-Bacterial
Coating



Over 6
Hours Hot



1 Year
Warranty



Made in
USA

CATALOG SHORTCUTS

14 BUFFET
40 AIRPOTS
62 SERVERS
124 TABLETOP
154 CUSTOMIZATION

156 INDEX
158 TERMS & CONDITIONS
159 CARE & HANDLING
159 FAQ
160 REP MAP



A MESSAGE FROM THE PRESIDENT

Last year, our family celebrated 75th anniversary milestones in two businesses originating from my grandparents' passion for food and hospitality and providing a memorable experience—Murray's Steakhouse as the operator and Service Ideas as the product company.

The occasion provided time for reflection on the past and all the customers, suppliers, and team members who made the businesses successful over the years. Only about 12% of companies are older than 26 years, and the prevailing theory, though unconfirmed, is that only about half a percent of all companies have what it takes to last 100 years.

As we look ahead to the future, we contemplate what it will take for us to reach the exclusive status that only .5% of businesses attain. We're motivated to get there, inspired by the opportunity to evolve in our ever-changing world and our passion to improve service and enhance guest experiences. We are dedicated to bringing our roots as operators into every product we introduce in an effort to give you and your customers the very best in serviceware.

On the following pages, you will find our tried-and-true products, as well as many new ones. Meeting your expectations is our goal. Thank you for the opportunity to continue providing products that enhance and maintain the integrity of what you're serving now and well into the future.

Sincerely,

Megan Murray Blohowiak





SUPERIOR PRODUCTS

We're not just another manufacturer. Each product we bring to you is developed to improve the way operators are serving food and beverages.

Our original products were created to improve service in our own restaurant and local businesses over 75 years ago. Early items like the Thermo-Serv® and Thermo-Plate® became popular across the nation and remain relevant today.

We continue to use our roots as restaurateurs to look through the lens of an operator, understanding the importance of reliable serviceware that enhances presentation and maintains the integrity of your food and beverage.

Our name—Service Ideas—serves as reminder of that product philosophy and drive **ideas** to make **service** better.

03



TESTED TO ENSURE QUALITY

In the foodservice industry, time is money. Foodservice professionals don't have time to worry about whether or not the product they've purchased is built from quality materials to meet foodservice standards and will hold up in a commercial environment.

That's why we've committed to making quality control a priority at Service Ideas. Our in-house quality department meticulously tests each new product so that it meets your standards.

We continually troubleshoot issues and test for ways to improve the durability and longevity of our products so you can focus on your business.

05



DELIVERED WITH CARE

Supply chain issues continue to affect all industries right now, and foodservice is not unique.

Over the years, Service Ideas has built strong relationships with reliable sources and continues to prioritize availability and promptness to get you the product you need, when you need it.

With over 1,800 products warehoused on site coupled with dedicated customer service and shipping teams, our stocked items are guaranteed to ship within 48 hours.

07

BUFFET

Coffee Urns & Gravity Pots 14-19

Cold Beverage Dispensers 20-39

Buffet Accessories 34-35

Ze Pe Trolley's & Buffet 36-39

AIRPOTS

Insulated Airpots 40-53

Airpot Displays 54-61

SERVERS

Elite Servers 62-73

Essential Servers 74-91

Carafe Accessories 85

Brew-Thru & Decanters 86-88

Beer Growlers 89

Classic Servers 92-101

Stainless Water Pitchers 102-107

Plastic Water Pitchers 108-111

Specialty Coffee Supplies 112-115

Tea Supplies 118-123

TABLETOP

Insulated Platters & Skillets 124-130

Table Service Lights 131

Bar Trays 132-139

Baskets 138-141

Bar & Wine 142-145

Coffee Accessories 146-149

Table Accessories 150-153

CUSTOMIZATION

154-155





56



66



80

CONTENTS

09

INTRODUCING **BLACK ONYX**



Pictured left to right: Bell Pitcher, Slim Pitcher, Cream and Sugar Caddy, Cold Beverage Dispenser, Round Drip Tray, Removable Insert Tray, Nicollet Series Carafe, Marquette Series Carafe, Altus Carafe

DARK. SEDUCTIVE. MYSTERIOUS.

Provide an enticing experience for your guests with our new Black Onyx finish—the newest addition to the Metallic Elements Collection from Service Ideas. Available across three lines of servers, two water pitchers, three serving trays, a cream and sugar caddy, beverage dispenser, and drip tray. Wherever the application, this collection **will** make a statement.



Nicollet Series Carafe
Page 69



Marquette Series Carafe
Page 69



Altus Carafe
Page 71



Slim Pitcher
Page 105



Bell Pitcher
Page 107



Removable Insert Tray
Page 138



Cream and Sugar Caddy
Page 152



Cold Beverage Dispenser
Page 25



Round Drip Tray
Page 35



METALLIC ELEMENTS

A COLLECTION OF METALLIC FINISHES
INSPIRED BY FINE JEWELRY



SCAN ME

Scan the QR code to view
all product lines available with
Metallic Elements finishes.

VINTAGE
GOLD



ROSE
GOLD

BLACK ONYX



DARK
TUNGSTEN



FLAME FREE™ THERMO-URN™

VACUUM INSULATION TECHNOLOGY



Introduced in 2010, the Flame Free™ Thermo-Urn™ is a Service Ideas exclusive product, engineered to achieve true vacuum insulation that provides 6+ hours of heat retention with no external heat source. This economical design significantly reduces labor and supply costs and has the potential to save you hundreds of dollars a year. You could receive a return on your investment within a matter of months! Furthermore, without the need for direct heat, your coffee will taste fresh until the last cup is poured. Available in a brushed (BS) or polished (PS) stainless finish, or a black (BL) or white (WH) powdercoat exterior, with a modern (MD) or regal (RG) leg.

- Vacuum insulated body
- Foam insulated lid
- Interior splash guard
- NSF listed spigot
- Lightweight yet heavy-duty legs



replacement parts: lid, lid knob, lid gasket, splash guard, handles, spigot, base, wrench, bolt, gaskets

REGAL LEGS



■ URN15VBSRG (HF)
 □ URN15VPSRG (HF)
 1.5 Gallon (192 oz.)
 12.5" X 12.5" X 22"



■ URN30VBSRG (HF)
 □ URN30VPSRG (HF)
 3 Gallon (384 oz.)
 13.25" X 14.5" X 25.5"



■ URN50VBSRG (HF)
 □ URN50VPSRG (HF)
 5 Gallon (640 oz.)
 16" X 16" X 28"

■ URN30VBLRG
 □ URN30VWHRG
 Powder Coated Exterior

MODERN LEGS



■ URN15VBSMD (HF)
 □ URN15VPSMD (HF)
 1.5 Gallon (192 oz.)
 12.5" X 12.5" X 22"



■ URN30VBSMD (HF)
 □ URN30VPSMD (HF)
 3 Gallon (384 oz.)
 13.25" X 14.5" X 25.5"



■ URN50VBSMD (HF)
 □ URN50VPSMD (HF)
 5 Gallon (640 oz.)
 16" X 16" X 28"

■ URN30VBLMD
 □ URN30VWHMD
 Powder Coated Exterior

Add "HF" to the end of any of our beverage dispenser product codes to make it hands-free! Spigots also sold separately.

15

UNIVERSAL THERMAL CONTAINERS

Our Universal Thermal Containers offer an affordable solution to serving large-volume events. These insulated coffee dispensers feature a brew-thru lid, plastic handles, and a sight-glass to view content levels, all while keeping your beverages hot for up to six hours. We've enhanced the coffee dispensers to now have a sleek carry handle, locking faucet, and removable drip tray. **New universal design** fits under most brewers. Detachable base for easy transportation.



GIU1GV2BLK (HF)
1 Gallon (128 oz.)
Black Powder Coat
14" X 9.25" X 20.5"

GIU15GV2BLK (HF)
1.5 Gallon (192 oz.)
Black Powder Coat
14" X 9.25" X 23.25"

Add "HF" to the end of any of our beverage dispenser product codes to make it hands-free! Spigots also sold separately.

replacement parts: lid funnel, sight glass kit, sight glass guard, locking and non-locking faucet, plastic stand, drip tray



GIU1GV2 (HF)
1 Gallon (128 oz.)
Brushed Stainless
14" X 9.25" X 20.5"



GIU15GV2 (HF)
1.5 Gallon (192 oz.)
Brushed Stainless
14" X 9.25" X 23.25"



GIU2GV2 (HF)
2 Gallon (256 oz.)
Brushed Stainless
14" X 9.25" X 24.25"

SLIM LINE THERMAL CONTAINERS

The Slim Line Thermal Container offers a more space-saving solution to our line of large-capacity insulated coffee dispensers. Featuring a plastic handle that rotates down and a 3-pillar base with a narrow profile, requiring less counter space. Seamless stainless-steel body makes a great canvas for custom wraps. Detachable base for easy transportation.



replacement parts: plastic lid, drip tray, spigot



GIUSL1G (HF)
1 Gallon (128 oz.)
Brushed Stainless
16.25" X 10.75" X 23.5"



GIUSL15G (HF)
1.5 Gallon (192 oz.)
Brushed Stainless
16.25" X 10.75" X 24"

Add "HF" to the end of any of our beverage dispenser product codes to make it hands-free! Spigots also sold separately.



MAKE IT YOUR OWN!

We can customize our thermal containers to be uniquely yours by wrapping them in your branding. Flip to page 154 for more information on how to customize Service Ideas products.

STAINLESS TEA URNS

SLIM

Our Slim Commercial Tea Urns are just 6" and 6.5" wide and feature a flip down handle in the back so it can rest against a wall in tight spaces. Complete with a snap-on drip tray that conveniently stores in the plastic lid when not in use.



ITSLS35G (HF)
3.5 Gallon (448 oz.)
Brushed Stainless
6" X 17.5" X 23"

ITSLS5GPL (HF)
5 Gallon (640 oz.)
Brushed Stainless
6.5" X 21" X 21"



ROUND

Our Round Commercial Tea Urns feature a cylindrical stainless-steel body to eliminate leaks and staggered rubber grip handles to transport a filled urn to high counter tops or buffet tables. Comes with a plastic brew-thru lid for direct brewing.



ITS3GPL (HF)
3 Gallon (384 oz.)
Brushed Stainless
14" X 15.25" X 16.75"

ITS5GPL (HF)
5 Gallon (640 oz.)
Brushed Stainless
14.25" X 15.25" X 21.75"



Add "HF" to the end of any of our beverage dispenser product codes to make it hands-free! Spigots also sold separately.

replacement parts: plastic lid, drip tray, spigot

replacement parts: plastic lid, spigot

CLEAR TEA URN

CLEAR BODY, CLEAR LID, CLEAR CHOICE

replacement parts: lid, container, drip tray, base plate, spigot, brew stand, brew stand, infuser tube



The Clear Tea Dispenser gives a new look to tea service; designed with a clear tank constructed with BPA-free Tritan™ for glass-like clarity and added strength that won't warp in the dishwasher. Unlike other plastics, this tank won't stain after repeated use with tea. Built-in hand grips make it easy to take it from brewer to counter for final display on its black base. Infuse custom flavors in your teas with the optional infuser tube that screws securely onto the lid to suspend fruits or herbs in the liquid. Add the plastic brew stand accessory to minimize potential splashing while brewing.



ITSLC35GBLINF (HF)

3.5 Gallon (448 oz.)
Clear Tritan & Black
6.25" X 16.75" X 23.25"

ITSLBASEBL

Optional Brew Stand
Black Sintra Plastic
5.75" X 13" X 10"

Add "HF" to the end of any of our beverage dispenser product codes to make it hands-free! Spigots also sold separately.

21

replacement parts: lid, stainless spigot, Tritan™ container, infuser wall, drip tray



SQUARE INFUSION

A commercial-grade product designed for daily use in catering and foodservice applications, as well as parties and events. It comes equipped with a unique flavor infusion wall that slides into the front of the dispenser to show off the flavors in your infused beverages. Fill the "flavor wall" with citrus, fruits, and herbs to create unique beverage offerings for your guests, or remove completely for serving plain water or juice. One-piece molded construction allows the corners to be rounded just enough to keep a square shape but still be easy to clean thoroughly. Includes matching drip tray and polished stainless steel spigot. All parts break down to be stored within the clear plastic body of the unit when not in use. NSF-listed for safe use in commercial foodservice applications.



SCD15SS (HF)

1.5 Gallon (230 oz.)

Brushed Stainless

11.25" X 8" X 19.75"





**SQUARE
INFUSION
DISPENSER**

ELITE COLD BEVERAGE

Our Elite Stainless Steel Cold Beverage Dispensers are constructed of high-quality stainless steel and BPA-free Tritan™ plastic. Each dispenser includes our new SSSPIGPS polished stainless steel spigot, adding an extra element of sophistication. Available in traditional brushed stainless steel, as well as four metallic finishes and four natural hydro-dipped patterns.

- Self-storing container
- All stainless-steel spigot
- NSF listed for commercial use
- Dishwasher safe container
- Removable infuser tube included
- Ice tube available, sold separately (CBDRTICETUBE)



3 Gallon (384 oz.)
12" X 11" X 22"

CBDRT3BSSS (HF)
Brushed Stainless

5 Gallon (640 oz.)
14.75" X 13.25" X 23"

CBDRT5BSSS (HF)
Brushed Stainless

NATURAL ELEMENTS COLLECTION



■ CBDRT3DWSS (HF)
3 Gallon (384 oz.)
Dark Wood
12" X 11" X 22"



■ CBDRT3LWSS (HF)
3 Gallon (384 oz.)
Light Wood
12" X 11" X 22"



■ CBDRT3MBSS (HF)
3 Gallon (384 oz.)
Travertine Marble
12" X 11" X 22"



■ CBDRT3WMSS (HF)
3 Gallon (384 oz.)
White Marble
12" X 11" X 22"

METALLIC ELEMENTS COLLECTION



■ CBDRT3VGSS (HF)
3 Gallon (384 oz.)
Vintage Gold
12" X 11" X 22"



■ CBDRT3RGSS (HF)
3 Gallon (384 oz.)
Rose Gold
12" X 11" X 22"



■ CBDRT3DTSS (HF)
3 Gallon (384 oz.)
Dark Tungsten
12" X 11" X 22"



■ CBDRT3BXSS (HF)
3 Gallon (384 oz.)
Black Onyx
12" X 11" X 22"

DONT FORGET THE DRIP TRAY! (SEE PAGE 35)

Add "HF" to the end of any of our beverage dispenser product codes to make it hands-free! Spigots also sold separately.

A clear plastic double wall dispenser with a stainless steel base and a fruit basket inside. The dispenser is filled with water and has a silver tap on the left side. The fruit basket contains strawberries, lemons, and cucumbers. The dispenser is placed on a wooden surface with green foliage in the background.

**DOUBLE WALL
DISPENSER**

CONDENSATION FREE EXTERIOR!

Our Double Wall Cold Beverage Dispenser completely eliminates sweating and condensation. The container is built from two pieces, making it extremely easy to clean for safe use in commercial applications. The container is constructed of BPA-free Tritan™ plastic and comes with a stainless-steel base, lid, and spigot.



CBDDW3GSS (HF)
3 Gallon (384 oz.)
Brushed Stainless
13" X 11.25" X 22.5"

replacement parts: lid, stainless spigot, Tritan™ container, ice tube, infuser tube

Add "HF" to the end of any of our beverage dispenser product codes to make it hands-free! Spigots also sold separately.

27

ESSENTIAL COLD BEVERAGE

ROUND DISPENSER

The Round Essential Cold Beverage Dispenser is the #1 best-selling cold beverage dispenser from Service Ideas. It includes a removable infuser tube that screws into the base of the lid for adding citrus, fruits and herbs to your drinks. The BPA-free plastic body offers the appearance of glass and the durability of plastic. The stainless lid and base enhance any presentation and is perfect for high-end buffets and beverage stations. All the parts break down and can be nested in the body for convenient storage.



CBDRT3SS (HF)
3 Gallon (384 oz.)
Brushed Stainless
12" X 11" X 22"



CBDRT5SS (HF)
5 Gallon (640 oz.)
Brushed Stainless
14.75" X 13.25" X 23"

replacement parts: lid, plastic spigot, Tritan™ container, ice tube, infuser tube, drip tray, ice core

Add "HF" to the end of any of our beverage dispenser product codes to make it hands-free! Spigots also sold separately.



RECTANGLE DISPENSER

The Rectangular Essential Cold Beverage Dispenser shares all of the same materials and sanitation listings as the round version. It includes 2 tubes: an infuser tube for drink customization, and an ice tube for cooling without diluting, and at only 8.25" wide, it offers great space savings as well.



CBDT3SS (HF)
3 Gallon (384 oz.)
Brushed Stainless
17.5" X 8.25" X 20"

replacement parts: brew basket, brew basket lid, brew basket handles, dispenser container, spigot



COLD BREW 'N' SERV™ SYSTEM

ALL-IN-ONE COLD BREW MAKER & DISPENSER

Improve efficiency and enhance your cold brew presentation with the Cold Brew 'N' Serv™ System. It includes a simple yet innovative brew basket that turns the Rectangle Cold Beverage Dispenser into an all-in-one cold brew coffee maker **and** dispenser, making cold brew more efficient, more sanitary, and more appealing. Easy-to-use brew basket with minimal handling for sanitary and mess-free brewing and serving.

- Patented brew basket is designed to drain into your dispenser, not on your counter
- Container sold separately for multi-batch brewing
- Holds 3 lbs. of coffee grounds yielding just under 3 gallons of finished cold brew coffee
- Stays fresh for up to seven days with proper refrigeration



CBNS3SS (HF)
3 Gallon (384 oz.)
Brushed Stainless
17.5" X 8.25" X 20"



CBNS3BSKT
3 lbs. of Coffee
Black Plastic
13.75" X 7" X 6.75"



CBDTCONTKIT
3 Gallon (384 oz.)
Clear Tritan™ Plastic
17.5" X 8" X 11.25"

Add "HF" to the end of any of our beverage dispenser product codes to make it hands-free! Spigots also sold separately.

31

CLASSIC COLD BEVERAGE

replacement parts: lid, plastic spigot, acrylic container, polypropylene container, ice tube, infuser tube



Add "HF" to the end of any of our beverage dispenser product codes to make it hands-free! Spigots also sold separately.



Our Classic Cold Beverage Dispensers come in an all-plastic construction, providing a more economical option to the popular stainless-steel version. The dispenser includes an infuser tube for easy drink customization. Add the optional ice tube with no perforation to cool without diluting. Ice tube included with the rectangular dispenser, sold separately for the round. Everything can be stored in the clear acrylic plastic body of the unit when not in use.



CBDRP3BL (HF)
3 Gallon (384 oz.)
Black/Opaque
12" X 11" X 21.25"



CBDP3BLK (HF)
3 Gallon (384 oz.)
Black/Opaque
16.75" X 8.25" X 20"

IDENTIFICATION ACCESSORIES

LASER-CUT ID TENTS

SANITATION: Cleaned, No Seating, Please Use Clean Cup, Sanitized

HOT BEVERAGES: House, Cider, Cocoa, Coffee, Decaf, Hot Water, Tea

COLD BEVERAGES: Apple, Cranberry, Iced Tea, Grape, Lemonade, Orange, Pineapple, Tomato, Water

DAIRY AND ALTERNATIVES: Almond Milk, 2% Milk, Coconut Milk, Cream, Dairy Free, Half & Half, Milk, Skim Milk, Soy Milk, Whole Milk

MISCELLANEOUS: Caution Hot Surface, Cold, Gluten Free, Hot, Nuts, Reserved, Sugar Free, Sweet, Unsweet, Vegan, Vegetarian



1C-BF-___-MOD

3" X 1.5" X 1.5"

LASER-CUT ID SIGNS

Coffee, Cream, Decaf, Milk, Reserved, Skim, Tea



1C-BF-___-SIGN

6.5" X 1" X 1"

Don't see what you need? Make your own tents! Custom order with an MOQ of 36.
Call customer service for more information.

DRIP TRAY ACCESSORIES

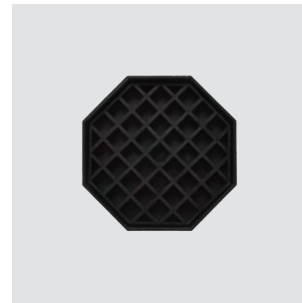
Our drip trays are great accessories for our urns, cold beverage and thermal containers. They can also double as a coaster for our carafes and water pitchers starting on page 60.



Round Stainless Drip Tray
■ DT6BS
6" X 6" X 1"



Square Stainless Drip Tray
■ DTSQ6SS
6.5" X 6.5" X 1.25"



Black Plastic Drip Tray
■ DT45
4.25" X 4.25" X 0.75"



NEW! Metallic Elements Collection
Round Stainless Drip Tray

- DT6BSVG
 - DT6BSRG
 - DT6BSDT
 - DT6BSBX
- 6" X 6" X 1"



Ze Pé is an acronym for Zema Giuseppe, owner, founder, and CEO of the company Giuseppe Zema. He and his wife Sonja run the first-generation family business, along with two of their sons, who work hands-on with the product and directly with the customers to make sure each piece meets the **Ze Pé** standards of quality and craftsmanship.

Design and creativity is top priority at **Ze Pé**. That's why Giuseppe Zema himself is in charge of product development and design, working with successful designers to bring tailor-made items to market. All parts and materials with direct food contact have been tested and approved safe for food service, and handcrafted into artisan buffet pieces and trolleys.

Contact us through our website to get access to the full catalog of **Ze Pé** trolleys or to receive a custom quote.



MORE INFORMATION

Scan the QR code for the full catalog of **Ze Pé** Trolleys and Buffet.



ITALIAN MADE TROLLEYS

zoppe

37



ITALIAN MADE BUFFET



ZePé has a long tradition of designing and crafting items for the buffet table—juice and cereal dispensers, displays, trays and stands, and service trolleys—serving customers in the luxury hotel industry, gourmet foodservice, top cruise lines, and superior catering services. **ZePé** products are 100% made in Italy using only high-quality materials and with 100% Italian style.

Contact us through our website to get access to the full catalog of **ZePé** buffet items or to receive a custom quote.



MORE INFORMATION

Scan the QR code for the full catalog of **ZePé** Trolleys and Buffet.

ECO-AIR®

GLASS-LINED AIRPOTS

replacement parts: lid, (pump, lever, decaf), suction pipe, glass liner, gasket.



The Eco-Air® line was the first full airpot line Service Ideas incorporated in 1999. A variety of sizes and finishes are still available today. The exterior is extremely durable compared to lesser quality airpots—just give the Eco-Air® a squeeze to feel the difference! The glass vacuum insulation keeps contents warm for 6–8 hours and is great for holding coffee for a long periods of time. Choose between a classic push pump lid or easy-to-use lever pump lid. All of our glass-lined Eco-Air® airpots are NSF certified for safe use in commercial foodservice applications.



SMOOTH BODY



■ ECAL19S - Lever
■ ECA19S - Pump
1.9 Liter (64.2 oz.)
Brushed Stainless
6" X 8" X 15"

■ ECAL25S - Lever
■ ECA25S - Pump
2.5 Liter (84.5 oz.)
Brushed Stainless
6" X 8" X 17"

■ ECAL22S - Lever
■ ECA22S - Pump
2.2 Liter (74.4 oz.)
Brushed Stainless
6" X 8" X 16"

■ ECAL30S - Lever
■ ECA30S - Pump
3 Liter (101.4 oz.)
Brushed Stainless
6" X 8" X 18"

SIGHT GLASS BODY



■ ECAL22SGY - Lever
■ ECA22SGY - Pump
2.2 Liter (74.4 oz.)
Brushed Stainless
6" X 8" X 15.25"

■ ECAL22PBLMATSG - Lever
2.2 Liter (74.4 oz.)
Black Plastic
6" X 8" X 15.25"

BLACK PLASTIC BODY



■ ECAL22PBLK - Lever
■ ECA22PBL - Pump
2.2 Liter (74.4 oz.)
Shiny Black Plastic
Smooth Base
6" X 8" X 16"

■ ECAL22PBLMAT - Lever
■ ECA22PBLMAT - Pump
2.2 Liter (74.4 oz.)
Matte Black Plastic
Ribbed Base
6" X 8" X 16"

POLISHED JEWELED BODY



■ ECAJL22S - Lever
■ ECAJ22SS - Pump
2.2 Liter (74.4 oz.)
Polished Spiral Cut
6" X 8" X 15.25"

Select styles available with a stainless steel liner.
See product and price index for more information.



ECO-AIR® SLIM

STAINLESS-LINED AIRPOTS

Our stainless-lined Eco-Air® airpots are available in four sizes designed with a smaller profile. Their shorter height allows them to fit in smaller spaces like beverage carts and small counter tops. Stainless vacuum insulation keeps contents warm for 4–6 hours and is incredibly durable to last a lifetime. Choose between a classic push pump lid or easy-to-use lever pump lid.



PUSH-BUTTON LID

SECA19S

Brushed Stainless
1.9 Liter (64.2 oz.)
5.5" X 7.5" X 12.25"

SECA22S

Brushed Stainless
2.2 Liter (74.4 oz.)
5.5" X 7.5" X 13"

SECA25S

Brushed Stainless
2.5 Liter (84.5 oz.)
5.5" X 8" X 13.75"

SECA30S

Brushed Stainless
3 Liter (101.4 oz.)
5.5" X 8" X 15.75"



LEVER LID

SECAL19S

Brushed Stainless
1.9 Liter (64.2 oz.)
5.5" X 7.5" X 12.25"

SECAL22S

Brushed Stainless
2.2 Liter (74.4 oz.)
5.5" X 7.5" X 13"

SECAL25S

Brushed Stainless
2.5 Liter (84.5 oz.)
5.5" X 8" X 13.75"

SECAL30SS

Brushed Stainless
3 Liter (101.4 oz.)
5.5" X 8" X 15.75"

replacement parts: lid, (pump, lever, decaf), suction pipe, glass liner, gasket.

LID CHOICES

FITS GLASS- AND STAINLESS-LINED ECO-AIR® AIRPOTS

Customize your Eco-Air® with one of these six lids. Use the black lids for full strength coffee and the orange for decaf.



EPL22BL
Push Button
Black



EPL22OR
Push Lid
Orange



EPLOR
Push Button
Black/Orange



ELLBL
Lever Lid
Black



ELLOR
Lever Lid
Orange



ELLBLORT
Lever Lid
Black/Orange

SIGNA-AIR

OUR SIGNATURE LEVER LID AIRPOTS

The Signa-Air Airpots feature a stainless-steel exterior with either glass or stainless vacuum insulation. Each airpot includes a pack of 4 convenient flavor tabs (coffee, decaf, tea, and hot water) to hang below the spout. Store them on the back of the lid when not in use. These durable airpots are a great fit for convenience stores, hotel lobbies, break rooms, and other high-volume settings. Now available with a new soft-touch rubberized surface in black and white. Lever pump lid only.



GLASS LINED, BRUSHED EXTERIOR



ENALG19S
1.9 Liter (64.2 oz.)
8.75" X 6.5" X 14.75"



ENALG22S
2.2 Liter (74.4 oz.)
8.75" X 6.5" X 15.25"



ENALG25S
2.5 Liter (84.5 oz.)
8.75" X 6.5" X 17"



ENALG30S
3 Liter (101.4 oz.)
8.75" X 6.5" X 18"



replacement parts: lid (black, chrome), suction pipe, glass liner, flavor indicator tabs

STAINLESS LINED, BRUSHED EXTERIOR



ENALS22S
2.2 Liter (74.4 oz.)
9" X 6" X 13.75"



ENALS25S
2.5 Liter (84.5 oz.)
9" X 6" X 15"



ENALS30S
3 Liter (101.4 oz.)
9" X 6" X 16.25"



ENALS37S
3.7 Liter (125 oz.)
9" X 6" X 17.75"



STAINLESS LINED, SPECIAL FINISHES



ENALS25PBLMAT
2.5 Liter (74.4 oz.)
9" X 6.75" X 15.25"
Black Lid
Black Plastic Exterior



ENALS22SCH
2.2 Liter (74.4 oz.)
9" X 6" X 13.75"
Chrome Lid
Brushed Exterior



ENALS22SCHBL
2.2 Liter (74.4 oz.)
9" X 6.5" X 15.5"
Chrome Lid
Soft-Touch Exterior



ENALS22SCHWH
2.2 Liter (74.4 oz.)
9" X 6.5" X 15.5"
Chrome Lid
Soft-Touch Exterior



COLOR ME SVAC!

INTERCHANGEABLE LEVER LIDS AND COLLARS

Add some color with the Color Me SVAC stainless-lined airpot. This product features an easy-to-use lock to easily switch out the lid and collar for color changes. This feature can also save you a lot of money in replacement airpots. On an ordinary airpot, a lid break near the handle or collar would mean throwing the whole airpot out. Now with a simple collar and lid switch, your airpot is in working order again. Lever pump lid only.



replacement parts: lid (lever), lid collar, suction pipe, gasket



STAINLESS LINED, BRUSHED STAINLESS EXTERIOR



■ CTAL22BL
 ■ CTAL22BLU
 ■ CTAL22BR
 ■ CTAL22GRN
 ■ CTAL22OR

2.2 Liter (74.4 oz.)
 6.75" X 8.75" X 11.5"

■ CTAL25BL
 ■ CTAL25BLU
 ■ CTAL25BR
 ■ CTAL25GRN
 ■ CTAL25OR

2.5 Liter (84.5 oz.)
 6.75" X 8.75" X 12.5"

■ CTAL30BL
 ■ CTAL30BLU
 ■ CTAL30BR
 ■ CTAL30GRN
 ■ CTAL30OR

3 Liter (101.4 oz.)
 6.75" X 8.75" X 13.25"

■ CTAL37BL
 ■ CTAL37BLU
 ■ CTAL37BR
 ■ CTAL37GRN
 ■ CTAL37OR

3.7 Liter (125 oz.)
 6.75" X 8.75" X 15"

STAINLESS LINED, METALLIC ELEMENTS



CTAL30BLVG
 3 Liter (101.4 oz.)
 Vintage Gold
 6.75" X 8.75" X 13.25"



CTAL30BLRG
 3 Liter (101.4 oz.)
 Rose Gold
 6.75" X 8.75" X 13.25"



CTAL30BLDT
 3 Liter (101.4 oz.)
 Dark Tungsten
 6.75" X 8.75" X 13.25"

STEELVAC™ AIRPOTS

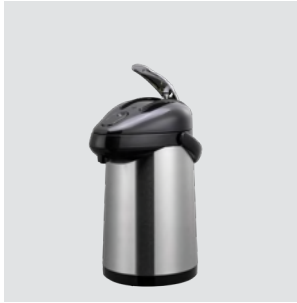
COMMERCIAL GRADE STAINLESS STEEL EXTERIOR

All of our SteelVac™ Airpots feature a stainless-steel outer shell for added durability in high-volume settings. A classic brushed satin finish helps reduce fingerprints and looks great in all settings and decors. Available with glass or stainless liners, and lever or pump lids. Pair with the plastic Roto Rack (page 58) to create a complete coffee display.



replacement parts: lid (lever and push), suction pipe, glass liner, gasket

GLASS LINED



GLAL220 – Lever
GLAP220 – Push
2.2 Liter (74.4 oz.)
7.25" X 9.5" X 13.25"



GLAL250 – Lever
GLAP250 – Push
2.5 Liter (84.5 oz.)
7.25" X 9.5" X 14.25"



GLAL300 – Lever
GLAP300 – Push
3 Liter (101.4 oz.)
7.25" X 9.5" X 15.5"

STAINLESS LINED



SSAL250 – Lever
SSA250 – Push
2.5 Liter (84.5 oz.)
7.25" X 9.5" X 13.25"



SSAL300 – Lever
SSA300 – Push
3 Liter (101.4 oz.)
7.25" X 9.25" X 15"



SSAL375 – Lever
SSA375 – Push
3.7 Liter (125 oz.)
7.25" X 9.5" X 17"

STEELVAC™ LIDS



SSALL



SSALLOR



SSAPL



SSALOR

STANLEY® COMMERCIAL

ERGOSERV® AIRPOT



The ErgoServ® Airpots from Stanley® Commercial feature an ergonomic comfort carry handle that reduces fatigue and a durable zinc die-cast lever in the lid that makes it easy to pump. The ErgoServ line offers the perfect balance between practicality, durability, and style, making it a popular choice in the hospitality industry. Lever pump lid only.



STAINLESS LINED, BRUSHED EXTERIOR



10-00180-008
2.2 Liter (74.4 oz.)
6.5" X 8.5" X 13"



10-00181-000
2.5 Liter (84.5 oz.)
6.5" X 8.5" X 13.5"



10-00189-000
3 Liter (101.4 oz.)
6.5" X 8.5" X 15"

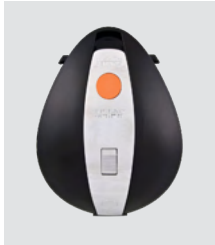
COLORED LID OPTIONS



10-00597-000
Black/Black



10-00597-002
Green/Black



10-00597-003
Orange/Black



10-00597-004
Brown/Black



FLIP TO PAGES 90, 91, AND 110 TO SEE MORE PRODUCTS FROM STANLEY® COMMERCIAL

LOCK 'N' CARRY

STAINLESS-LINED AIRPOT

Our Lock 'N' Carry Airpot features 18/8 stainless steel double wall construction with vacuum insulation to keep contents warm for 4–6 hours. The easy-to-use lid is designed with an innovative locking mechanism that allows you to protect yourself and your customers when transporting full units. This durable airpot is great for convenience stores, hotel lobbies, break rooms and other high-volume settings.



OPEN OR LOCKED, YOU CHOOSE! THE UNIQUE LOCKING MECHANISM PREVENTS SPILLING AND HELPS COFFEE STAY FRESH LONGER.

STAINLESS LINED, PUMP LID



SVAP25P
2.5 Liter (84.5 oz.)
6.25" X 9" X 13"



SVAP30P
3 Liter (101.4 oz.)
6.25" X 9" X 14.25"

STAINLESS LINED, LEVER LID



SVAP25L
2.5 Liter (84.5 oz.)
6.25" X 9" X 13"



SVAP30L
3 Liter (101.4 oz.)
6.25" X 9" X 14.25"



SVAP38CPL
3.8 Liter (128.5 oz.)
6.25" X 9" X 16.75"

COVER 'EM UP

AIRPOT COVER-UPS

Our redesigned airpot cover-ups feature a universal lid design that fits both standard push pump or lever pump airpots. An adjustable disk in the base lets you raise the base up or down to fit your airpot perfectly. Available in a brushed (BS) or polished (PS) stainless finish. Pair with our Stainless Drip Trays on page 35 to tie the look together.

replacement parts: lid, adjustable disk



■ APC716BS
■ APC716PS

11.25" X 9.5" X 17.75"

Fits up to 2.5-liter capacities of the Eco-Air®

■ APC817BS
■ APC817PS

13" X 11" X 19"

Fits SteelVac™ GLA and SSA

AND ACCESSORIZE!

STAINLESS ID CHAINS



Our Stainless ID Chains are an elegant way to help customers know what you are serving. Available individually or as a variety pack with all three chains.

IDVAR

Variety Pack:
1 each Hot Water, Coffee,
and Decaf
2.5" X 1.5"



IDCHHW
Hot Water
2.5" X 1.5"



IDCHCF
Coffee
2.5" X 1.5"



IDCHDE
Decaf
2.5" X 1.5"

55

BUILD-YOUR-OWN AIRPOT RACK!

BUNDLED KITS

replacement parts: drip trays, end caps



The Starter:
APD2BL
(2)APDT1LBL, (1)APC2V2, (1)DT4BLSS,
(1)APENDCAPS



The HiLo:
APD4BL
(2)APDT1LBL, (2)APDT1HBL, (1)APC5V2,
(2)APENDCAPS



The Trio:
APD3BL
(3)APDT1LBL, (1)APC5V2, (1)APENDCAPS



The Two-Tier Trio:
APD6BL
(3)APDT1LBL, (3)APDT1HBL, (1)APC2V2,
(1)APC5V2

A TOTALLY MODULAR DISPLAY SYSTEM

Display is a snap with the Build-Your-Own Modular Airpot Station. This customizable display solution can be assembled in countless ways to create your perfect coffee station. Mix and match the 6 separate components as you wish!



MODULES



APC5V2
5-Compartment
Condiment Module
11" X 13.5" X 13"



APC2V2
2-Compartment Condiment
Module
10.75" X 4.75" X 4"



APDT1HBL
Airpot Holder & Drip
Tray Module, High
12.25" X 8.25" X 8.75"



APDT1LBL
Airpot Holder & Drip Tray
Module, Low
12.25" X 8.75" X 2.5"



APENDCAP
Set of 2
Finishing End Caps

PLASTIC ROTO RACK®



replacement parts: drip trays, adjustable disks

A TURNTABLE FOR YOUR AIRPOTS

The Plastic Roto Rack® is a customer friendly, commercial grade display system, accommodating a wide array of airpot dimensions while maximizing counter space. This lazy susan rotation system allows you to display 3 airpots with a diameter of 7.5" or less and 3 additional compartments for cups, stir sticks and condiments. Includes a removable drip tray.

RRAP3BLK
Triple Roto Rack
22" X 22" X 3.75"

COMBO AIRPOT STATION

ALL-IN-ONE COFFEE PLUS CONDIMENT STORAGE

The Combo Airpot Stations fits 1–2 airpots, along with 5 compartments for standard coffee condiments. Adjustable disks in the stand to fit many sizes of airpots. Removable drip tray comes apart for easy cleaning. Great coffee station for offices, convenience stores and healthcare facilities.



replacement parts: drip trays, adjustable disks



APLR15BL
Single Airpot Station
22" X 22" X 3.75"



APLR25BL
Double Airpot Station
26" X 13.5" X 5.75"

59

AIRPOT DISPLAYS

WIRE AIRPOT RACKS

When space is limited, wire racks help keep beverage service areas organized. The black wire racks from Service Ideas hold 2 or 3 airpots with a diameter of 7.5" or less. Constructed from powder coated stainless steel wire. Removable black drip trays for easy cleaning. Great airpot rack for offices, convenience stores and healthcare facilities. Try clipping the double and triple together to make a five-pot stand.



replacement parts: drip trays



APR2BLC
Double Wire
Airpot Rack
20" X 13" X 9"



APR3BLC
Triple Wire
Airpot Rack
22" X 14" X 13"

MODULAR AIRPOT STANDS

Our Modular Airpot Stands fit all airpots! They come in two separate pieces. Clip them together or use them separately to create a unique set-up that works best for you. Constructed from a lightweight and durable black styrene plastic. Removable grate for easy cleanup.



APS1CBL

Single Airpot Stand
7.75" X 24.25" X 16"



APS2BL

Double Airpot Stand
7.75" X 24.25" X 16.25"

CONDIMENT CADDIES

Store and organize a multitude of beverage condiments such as sugars, creamers, cups, lids, and sleeves in one of our Condiment Caddies. A great addition to any coffee station!



OCH7715C

Octagon Caddy
7" X 7" X 16.5"



CCPL8V2

8-Part Caddy
9" X 23" X 11"



SC1090

6-Part Caddy
8.5" X 14.5" X 2.75"



APS1

Airpot Drip Tray
8" X 12" X 2.25"



ELITE FLIP-TOP SERVERS



DINE IN WITH NICOLLET AND MARQUETTE

These stainless-steel beauties are vacuum insulated to provide 4-6 hours of maximum heat retention for your coffee service. Shapely silhouettes give these servers an upscale feel, perfect for fine dining and catering elegant events. Both come in brushed and polished finishes with either a push button or flip-top lid. Choose the push-button lid if you need a more spill-proof option to leave coffee at the table, or the flip-top lid for a more multi-purpose server, suitable for serving a variety of food and beverages including sauces, soups, syrups, creams, and coffees.



replacement parts: stopper lid



NICOLLET FLIP-TOP CARAFE

The tapered base of the Nicollet Carafe offers a slim profile with an elegant shape. Available in 3 versatile sizes and 2 lid styles to accommodate a variety of applications. Available in a brushed (BS) or polished (PS) stainless finish.

■ NIC06BS
■ NIC06PS

0.6 Liter (20 oz.)
4.5" X 6" X 7.25"

■ NIC10BS
■ NIC10PS

1 Liter (33.8 oz.)
4.5" X 5.5" X 8.5"

■ NIC15BS
■ NIC15PS

1.5 Liter (50.7 oz.)
5.25" X 6.25" X 10.5"



MARQUETTE FLIP-TOP CARAFE

The Marquette Carafe is available in 5 versatile sizes and is an elegant addition to your table. The tapered neck, collar and lid, coordinates with the Nicollet but with a wider more stately base. Available in a brushed (BS) or polished (PS) stainless finish.

■ MAR03BS
■ MAR03PS

0.3 Liter (10 oz.)
4.5" X 5.5" X 6"

■ MAR06BS
■ MAR06PS

0.6 Liter (20 oz.)
4.5" X 6" X 6.5"

■ MAR10BS
■ MAR10PS

1 Liter (33.8 oz.)
5" X 6" X 7.5"

■ MAR15BS
■ MAR15PS

1.5 Liter (50.7 oz.)
5.5" X 6.5" X 9"

■ MAR20BS
■ MAR20PS

20 Liter (67.6 oz.)
5.5" X 6.5" X 10.5"

NATURAL ELEMENTS

NICOLLET SERIES CARAFE

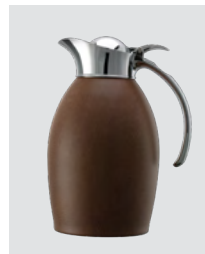
Our elite flip-top Nicollet Series Carafes are stocked in six natural patterns applied with a hydro dipping technique.



replacement parts: stopper/lid



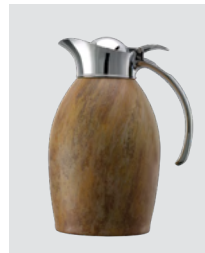
NIC10BSGM
1 Liter (33.8 oz.)
4.75" X 5.5" X 8.5"
Gray Marble



NIC10BSLTH
1 Liter (33.8 oz.)
4.75" X 5.5" X 8.5"
Leather



NIC10BSWM
1 Liter (33.8 oz.)
4.75" X 5.5" X 8.5"
White Marble



NIC10BSMB
1 Liter (33.8 oz.)
4.75" X 5.5" X 8.5"
Travertine Marble



NIC10BSLW
1 Liter (33.8 oz.)
4.75" X 5.5" X 8.5"
Light Wood



NIC10BSDW
1 Liter (33.8 oz.)
4.75" X 5.5" X 8.5"
Dark Wood



CUSTOM FINISHES

15 natural patterns (shown right) available for special order (MOQ 6) on any size Nicollet or Marquette Series Carafe.



Pictured from left to right: BW Burlwood, GM Gold Marble, BG Black Granite

ELITE PUSH-BUTTON SERVERS

replacement parts: push-button lid, decaf indicator tabs



NICOLLET PUSH-BUTTON CARAFE

The tapered base of the Nicollet Carafe offers a slim profile with an elegant shape. Available in 3 versatile sizes and 2 lid styles to accommodate a variety of applications. Available in a brushed (BS) or polished (PS) stainless finish.

■ NIC06BSPB
■ NIC06PSPB

0.6 Liter (20 oz.)
4.5" X 6" X 7.25"

■ NIC10BSPB
■ NIC10PSPB

1 Liter (33.8 oz.)
4.5" X 5.5" X 8.5"

■ NIC15BSPB
■ NIC15PSPB

1.5 Liter (50.7 oz.)
5.25" X 6.25" X 10.5"



MARQUETTE PUSH-BUTTON CARAFE

The Marquette Carafe is available in 5 versatile sizes and is an elegant addition to your table. The tapered neck, collar and lid, coordinates with the Nicollet but with a wider more stately base. Available in a brushed (BS) or polished (PS) stainless finish.

■ MAR10BSPB
■ MAR10PSPB

1 Liter (33.8 oz.)
5" X 6" X 7.5"

■ MAR20BSPB
■ MAR20PSPB

2 Liter (67.6 oz.)
5.5" X 6.5" X 10.5"

METALLIC ELEMENTS

Our elite push-button Nicollet Series Carafes and Marquette Series Carafes are stocked in four Metallic Elements finishes, inspired by fine jewelry—vintage gold (VG), rose gold (RG), dark tungsten (DT), and black onyx (BX). Stick with one metal finish to create a stunning monochromatic scheme or mix-and-match for a trendy mixed metals look.



NICOLLET

- NIC10BSPBVG
- NIC10BSPBRG
- NIC10BSPBDT
- NIC10BSPBBX

1 Liter (33.8 oz.)
4.5" X 5.5" X 8.5"

MARQUETTE

- MAR10BSPBVG
- MAR10BSPBRG
- MAR10BSPBDT
- MAR10BSPBBX

1 Liter (33.8 oz.)
5" X 6" X 7.5"



67



**ALTUS
CARAFES**

SLEEK & CHIC VACUUM INSULATED CARAFE

The Altus Carafe is a stunning beverage server with a unique sleek and slender design. Available in three sizes with a classic brushed (BS) finish that will compliment any tablescene, along with four new Metallic Elements finishes—vintage gold (VG), rose gold (RG), dark tungsten (DT), and black onyx (BX)—in the 1-liter size. Double wall vacuum insulated with a stainless-steel liner to keep coffee and other beverages hot or cold for 4-6 hours. NSF listed for commercial use.



replacement parts: stopper/lid



■ **ALTU06BS**
0.6 Liter (20 oz.)
5.75" X 4.25" X 7.75"
Brushed Stainless



■ **ALTU10BS**
1.0 Liter (33.8 oz.)
5.75" X 4.5" X 10.25"
Brushed Stainless



■ **ALTU15BS**
1.5 Liter (50.7 oz.)
6.25" X 5" X 11.25"
Brushed Stainless

■ **ALTU10BSVG**
■ **ALTU10BSRG**
■ **ALTU10BSDT**
■ **ALTU10BSBX**
1.0 Liter (33.8 oz.)
5.75" X 4.5" X 10.25"
Metallic Elements Finishes

**PAIR WITH THE MATCHING
WATER PITCHER ON PG. 106**

69

SMART CHOICE SERVER

This smart and stylish coffee carafe comes in four different sizes with an all-polished body, complete with a polished flip-top lid, an all-metal stopper, and ergonomic handle. Great for coffee, cream, and other hot or cold beverages.



replacement parts: stopper lid



SVSC03PS
0.3 Liter (10 oz.)
4.75" X 5.75" X 5.5"
Polished Stainless



SVSC06PS
0.6 Liter (20 oz.)
4.75" X 5.75" X 7.25"
Polished Stainless



SVSC10PS
1.0 Liter (33.8 oz.)
4.75" X 5.75" X 10.25"
Polished Stainless



SVSC13PS
1.3 Liter (44 oz.)
4.75" X 5.75" X 10.25"
Polished Stainless

STAINLESS SQUARE SERVER

The Stainless Square Server features a clean-pour spout, a flip-top stopper lid, and a unique square design. A thin handle makes it easy to carry multiple servers with one hand. Available in four sizes with a traditional brushed stainless finish.



replacement parts: stopper lid



SVSQ04BS
0.4 Liter (13.5 oz.)
4" X 6" X 6.75"



SVSQ07BS
0.7 Liter (23.7 oz.)
4.5" X 6.25" X 7.5"



SVSQ10BS
1 Liter (33.8 oz.)
4.75" X 6.5" X 8.75"



SVSQ15BS
1.5 Liter (50.7 oz.)
5.25" X 6.75" X 10"

71

A POP OF COLOR!

replacement parts: brew basket, brew basket lid, brew basket handles, dispenser container, spigot



POWDER COATED CLASSY™ CARAFES

STAINLESS VACUUM



- CJZS1BLK
- CJZS1BLU
- CJZS1RED
- CJZS1WHT

1.0 Liter (33.8 oz.)
5.5" X 6.5" X 10"

GLASS VACUUM



- CJZ1BLK
- CJZ1BLU
- CJZ1RED
- CJZ1WHT

1.0 Liter (33.8 oz.)
5.5" X 6.5" X 10"

CLASSY™ CARAFES

The Classy™ Carafe features a zinc-plated handle, collar, and lid, offering a more solid and durable design. Constructed with a stainless-steel exterior and a stainless or glass vacuum interior that holds hot and cold temperatures for 4–8 hours. Includes an optional decaf indicator sock made from orange silicone that easily slips on and off the push button lid. All sizes available in a brushed (BS) or polished (PS), or copper (CP) stainless finish. Durable powder coated finishes in blue (BLU), black (BLK), red (RED), and white (WHT) also available for the 1-liter size.

- Heavy duty zinc-plated handle, collar, and lid
- Choose stainless or vacuum insulation
- Includes orange decaf indicator sock

STAINLESS VACUUM



- CJZS6BS
- CJZS6CP
- CJZS6CH

0.6 Liter (20 oz.)
5" X 6.5" X 8.75"

GLASS VACUUM



- CJZ6BS
- CJZ6CP
- CJZ6CH

0.6 Liter (20 oz.)
5" X 6.5" X 8.75"



- CJZS1BS
- CJZS1CP
- CJZS1CH

1.0 Liter (33.8 oz.)
5.5" X 6.5" X 10"



- CJZ1BS
- CJZ1CP
- CJZ1CH

1.0 Liter (33.8 oz.)
5.5" X 6.5" X 10"

73

CONTROL THE FLOW



The Flow Control Carafe's uniqueness comes from the ability to control how much liquid is dispensed with a patented adjustable rubber lid gasket. Set the gasket wide open for trained wait staff, or just slightly open for self-serve table service. Not only does it help with portion control, but it also serves as a safety feature, allowing customers to pour their own coffee at a slower flow rate to prevent spills and burns. Add the brew-thru lid for a versatile brewer-to-table presentation.

- Patented lid design available in regular, decaf, and brew-thru
- NSF listed design is safe for dairy products
- Agion® coating suppresses bacteria growth



FLOW CONTROL CARAFE



FCC06SS

0.6 Liter (20 oz.)
4.75" X 6.75" X 6"



FCC12SS

1.2 Liter (40.5 oz.)
4.75" X 6.75" X 8"



FCC16SS

1.6 Liter (54 oz.)
5.25" X 7" X 9.5"



FCC20SS

2 Liter (67.6 oz.)
5.25" X 7" X 11"

LID OPTIONS



FCCLBL

Flow Control
Regular Black



FCCLOR

Flow Control
Decaf Orange



FCCBTBLK

Brew Thru
Regular Black



FCCBTOR

Brew Thru
Decaf Orange

75

SLIM SERVERS

The Slim Servers feature a push-button lid with a no-drip spout and stainless vacuum insulation for a temperature retention of 4–6 hours. The over-molded rubber handle creates an extra-comfortable grip when pouring. Boasting a small footprint and lightweight design, making this carafe ideal for room service.



replacement parts: lid (regular, decaf)



83706
0.6 Liter (20 oz.)
4.75" X 5.75" X 7.5"
Brushed Stainless



83710
1.0 Liter (33.8 oz.)
4.75" X 5.75" X 9.5"
Brushed Stainless



83715
1.5 Liter (50.7 oz.)
4.75" X 5.75" X 11.25"
Brushed Stainless

STAINLESS TOUCH

The Stainless Touch Carafe features an unbreakable stainless liner with vacuum insulation that retains hot or cold temperatures for 4–6 hours. Its newly designed, stay-clean lid allows liquid to pour under it—not through it—creating a more sanitary server. Decaf lid available, sold separately.



ELITE STAINLESS TOUCH, CHROME LID



LVP67
0.6 Liter (20 oz.)
4.75" X 7.25" X 7.5"
Polished Stainless



LVP1000
1.0 Liter (33.8 oz.)
4.75" X 7.25" X 8.5"
Polished Stainless



LVP1500
1.5 Liter (50.7 oz.)
4.75" X 7.25" X 10.25"
Polished Stainless

STAINLESS TOUCH, BLACK LID



KVP67
0.6 Liter (20 oz.)
4.75" X 7" X 7.5"
Brushed Stainless



KVP1000
1.0 Liter (33.8 oz.)
4.75" X 7" X 8.25"
Brushed Stainless



KVP1500
1.5 Liter (50.7 oz.)
4.75" X 7" X 10.25"
Brushed Stainless



KVP1900
1.9 Liter (64.2 oz.)
4.75" X 7" X 12.25"
Brushed Stainless

replacement parts: lid (regular, decaf), gasket



STEELVAC™ CREAMERS

The SteelVac™ Creamers feature an unbreakable stainless liner with vacuum insulation that retains hot or cold temperatures for 4–6 hours. Now with removable and interchangeable stainless-steel and footed black plastic bases. Designed with a screw top lid for easy cleanup and a curved handle for a comfortable pour. NSF listed for superior cleanability and safety.



replacement parts: lid, stainless base, footed plastic base



**STAINLESS LINER,
PLASTIC FOOTED BASE**

**STAINLESS LINER,
STAINLESS STEEL BASE**



SSN70
0.7 Liter (23.7 oz.)
4.5" X 6" X 9"

SSN100
1.0 Liter (33.8 oz.)
4.5" X 6" X 11.5"

S2SN70
0.7 Liter (23.7 oz.)
3.5" X 6" X 9.25"

S2SN100
1.0 Liter (33.8 oz.)
4.5" X 6" X 11.5"

STEELVAC™ ETCHED CREAMER

Etched with our most popular creamer options. Don't see what you're looking for? Check out our customization program on page 146 to add your own logo or content label.



SSN1002PCTET – 2% Milk
SSN100HHET – Half & Half
SSN100SMET – Skim Milk
SSN100WHOLEET – Whole Milk
1.0 Liter (33.8 oz.)
4.5" X 6" X 11.5"
Plastic Footed Base



S2SN1002PCTET – 2% Milk
S2SN100HHET – Half & Half
S2SN100SMET – Skim Milk
S2SN100WHOLEET – Whole Milk
1.0 Liter (33.8 oz.)
3.5" X 6" X 11.5"
Stainless Steel Base

NEW! **PURE WHITE TOP**



Your favorite SteelVac™ Creamer, now available with a fresh and clean white top to match the dairy and dairy alternatives inside.



STAINLESS LINER, STAINLESS STEEL BASE



S2SN70WHT
0.7 Liter (23.7 oz.)
3.5" X 6" X 9.25"



S2SN100WHT
1.0 Liter (33.8 oz.)
4.5" X 6" X 11.5"

STEELVAC™ ETCHED CREAMER



S2SN100WHOLEETWHT – Whole Milk
S2SN100HHETWHT – Half & Half
S2SN1002PCTETWHT – 2% Milk
S2SN100SMETWHT – Skim Milk
1.0 Liter (33.8 oz.)
4.5" X 6" X 11.5"



STEELVAC™

ESSENTIAL CARAFE

The SteelVac™ Essential Carafe features an unbreakable stainless liner with vacuum insulation that retains hot or cold temperatures for 4–6 hours. It works with a push-button lid or a brew-thru lid (FVPBTL) for a versatile brewer-to-table presentation. The push-button lid allows liquid to flow under, not through it, and can be easily taken apart for thorough cleaning. Three sizes available.



BRUSHED STAINLESS



FVPC12
1.2 Liter (40.6 oz.)
7.25" X 5.75" X 8.5"



FVPC15
1.5 Liter (50.7 oz.)
7.25" X 5.75" X 9.25"



FVPC20
2 Liter (67.7 oz.)
7.25" X 5.75" X 10"

replacement parts: lid (regular, decaf, brew-thru)

BRUSHED STAINLESS, DAIRY ETCHED



FVPC152PCTET – 2% Milk
FVPC15HALFET – Half & Half
FVPC15SKIMET – Skim Milk
FVPC15WHOLEET – Whole Milk
1.5 Liter (50.7 oz.)
7.25" X 5.75" X 9.25"

STEELVAC™ SLIM CARAFE

The SteelVac™ Slim Carafe is built with a long trigger on the push button lid for easy, one-handed operation. The 2-liter size has a brew-thru lid and fits under most standard brewers.



BREW-THRU LID



SJ60SS
0.6 Liter (20 oz.)
3.5" X 6.5" X 8.5"



SJ10SS
1 Liter (33.8 oz.)
3.5" X 6.5" X 10.5"



SJ20SS
2 Liter (67.7 oz.)
5" X 7.25" X 12"



SJB20S
2 Liter (67.7 oz.)
5.25" X 6.5" X 11.5"
\$62.00

replacement parts: lid (regular, brew-thru)

STEELVAC™ SCREW-TOP CARAFE

The SteelVac Screw-Top Carafe features an unbreakable stainless liner with vacuum insulation that retains hot or cold temperatures for 4–6 hours. Designed with a screw top lid for easy cleanup and a curved handle for a comfortable pour. The colored options will stand out on your counter-top.



■ **FS7BL**
□ **FS7WH**
0.7 Liter (23.7 oz.)
4" X 6" X 9"



■ **FS10BL**
□ **FS10WH**
1 Liter (33.8 oz.)
4" X 6" X 11.25"



replacement parts: lid

83

PORTION CONTROL SERVER

The Portion Control Carafe has a unique lid that lets you control portions with a twist of the lid. Set it to "LESS" for a light stream and more controlled pour, or "MORE" for a looser opening and faster pour.

- NSF listed design is safe for dairy products
- Collar twists off completely from jug for thorough cleaning
- Agion® coating suppresses bacteria growth



replacement parts: lid, gasket



700NK-N
0.7 Liter (23.7 oz.)
3.75" X 5.5" X 9"



1000NK-N
1 Liter (33.8 oz.)
3.75" X 5.5" X 11"

FLAVOR BANDS

WHY COMMIT TO ONE FLAVOR?

Flavor bands are great for differentiating creamers and are an easy alternative to custom printing or etching. Our Flavor ID Bands are designed for 4" diameter carafes, available in 7 colors and labels, and made with non-toxic rubber. Pair with our SteelVac™ Creamers and Carafes found on pages 78–83.



3.5" X .75"
1 Flavor Band

- FB2MILK
- FBALMONDMILK
- FBCREAM
- FBDECAF
- FBHALF&HALF
- FBHOTWATER
- FBNONFATMILK
- FBREGULAR
- FBSKIM
- FB SOYMILK
- FBTEA

FBCOLDVAR
6 Pack Bands
2 Each: Cream,
Half & Half, Skim
3.5" X .75"

3FBVARIETY
7 Pack Bands
1 Each: Cream,
Half & Half, Hot Water,
Skim Milk,
Tea, Decaf
3.5" X .75"

85

BREW 'N' POUR® CARAFE

Bring hot coffee from brewer to table with the Brew 'N' Pour® Carafe, perfect for use in a variety of low-profile brewers. Choose from a regular or decaf lid with or without clock timer. The clock lid helps notify when your coffee is no longer fresh, just turn the dial to the time you last brewed to show your customers how fresh the coffee is.

- Ergonomic handle for comfortable pouring
- Stainless vacuum insulation for 4–6 hours of heat retention
- Brushed finish reduces fingerprints
- Seamless body is dishwasher safe



replacement parts: lid (regular, decaf, clock)

ORIGINAL LID



BNP19BL
1.9 Liter (64.2 oz.)
6.5" X 8.5" X 7.75"



BNP19DL
1.9 Liter (64.2 oz.)
6.5" X 8.5" X 7.75"

CLOCK LID



BNP19V4
1.9 Liter (64.2 oz.)
6.5" X 8.5" X 7.75"



BNP19ORV4
1.9 Liter (64.2 oz.)
6.5" X 8.5" X 7.75"

BREW 'N' POUR WIRE RACK



BNPR2
Wire Rack
7.5" X 13" X 7.5"

CLASSIC COFFEE DECANTERS

CLEAR DECANTER

Bring hot coffee from brewer to table with the PCB18 Clear Coffee Decanter. The BPA-free Tritan® plastic body offers the appearance of glass and the durability of plastic. The stainless-steel base evenly warms the coffee. Works great with most low-profile brewers. Slip the removable, orange decaf indicator sleeve on the handle to identify your caffeine-free brews.



PCB18
1.8 Liter (60.8 oz.)
5" X 6.75" X 7"

STAINLESS LINER, BRUSHED BODY, BREW-THRU LID

For an insulated alternative to the classic clear decanter, try our Stainless Decanters for an insulated brewer-to-table presentation. Use the SHS19S with most low-profile brewers, and the SHS19T with tall airpot brewers.



SHS19S
1.9 Liter (64.2 oz.)
6.5" X 8.75" X 7"
Short



SHS19T
1.9 Liter (64.2 oz.)
5" X 6.5" X 11.5"
Tall

replacement parts: lid (regular, decaf, clock)

replacement parts: lid (regular, decaf, clock)

THERMO CRAFT® GROWLER

Transport your favorite beverage in this 64-ounce stainless vacuum insulated growler, designed to keep your beverage at optimal drinking temperature for over 12 hours. Our patented design with offset neck creates a flat front and reduces airlock for an ultra-smooth pour from growler to glass.



VACUUM INSULATED GROWLER

replacement parts: lid, gasket



GRW64BS

1.9 Liter (64.2 oz.)
5.25" X 5.25" X 10.5"
Brushed Stainless

GRW64HM

1.9 Liter (64.2 oz.)
5.25" X 5.25" X 10.5"
Hammered Black

89

STANLEY® ERGOSERV® COLLECTION

Service Ideas is the exclusive provider of Stanley® Commercial products to the foodservice industry. Superior FerroStat insulation retains temperature for 4–6 hours. All products are NSF listed and come with a 5-year vacuum insulation warranty.



replacement parts: lid, content indicator socks, gaskets



ERGOSERV® CREAMER

10-00744-000
1 Liter (33.8 oz.)
4.25" X 7" X 11"

IDENTIFICATION SOCKS



10-00209-VAR4
4 Pack Socks: Milk, Skim, Soy, Cream

10-00209-001 Skim	10-00209-003 Cream
10-00209-002 Milk	10-00209-004 Soy

ERGOSERV® BREW-IN CARAFE



10-00185-000
1.9 Liter (64.2 oz.)
5.5" X 8" X 12"



10-00183-000
1.9 Liter (64.2 oz.)
7" X 9" X 7.5"

ERGOSERV® CARAFE



10-00006-000
0.6 Liter (20 oz.)
4.25" X 7" X 7.5"



10-00007-000
1 Liter (33.8 oz.)
5.25" X 8" X 9"



10-00008-000
1.5 Liter (50.7 oz.)
5.25" X 8" X 9"



ERGOSERV® PITCHER WITH LID

10-00009-010
1.9 Liter (64.2 oz.)
5.5" X 8.5" X 10"

Thermo-Serv®

THE ORIGINAL INSULATED CARAFE

An industry staple since 1956, the Thermo-Serv® Server is a classically designed carafe that features a durable ABS plastic shell with double-wall foam insulation. Ideal for serving hot coffee and water at the perfect temperature for 2-3 hours. Sonic welded seams create an ultra-smooth body and metallic flakes give the exterior a touch of sparkle.



replacement parts: lid (regular, decaf)



FLIP-TOP LID



■ TS501BL
■ TS501CB
■ TS501KB
0.6 Liter (20 oz.)
4" X 5.75" X 7.5"



■ TS101BL
■ TS101CB
■ TS101KB
1 Liter (33.8 oz.)
4" X 6" X 9"



■ TS411BL
■ TS411CB
■ TS411KB
2 Liter (67.6 oz.)
4.75" X 7" X 10.5"

PUSH-BUTTON LID



■ PB501BL
■ PB501CB
■ PB501MG
0.6 Liter (20 oz.)
3.75" X 6" X 7.5"



■ PB101BL
■ PB101CB
■ PB101MG
1 Liter (33.8 oz.)
4" X 6.25" X 9.25"



■ PB421BL
■ PB421CB
2 Liter (67.6 oz.)
4.5" X 7" X 11"

TWIST 'N' SERV™ CARAFE

replacement parts: push button lid, twist lid



We've redesigned our Twist 'N' Serv™ Carafe to serve you and your guests better! Now these servers are NSF listed for safe and confident commercial use, dishwasher safe for easy and thorough cleaning, and stackable for easy storage and drying. Featuring the same durable BPA-free plastic and foam insulation for 2–3 hours of heat retention, this push-button carafe is ideal for healthcare, government, and general business settings. Universal lids fit on every size server, also available in twist lid style.



A REDESIGNED CLASSIC



■ TNSPB06BL
□ TNSPB06WH
0.6 Liter (20 oz.)
6" X 7.75" X 7.75"



■ TNSPB12BL
□ TNSPB12WH
1.2 Liter (40.5 oz.)
6" X 8" X 9.75"



■ TNSPB2BL
□ TNSPB2WH
2 Liter (67.6 oz.)
6.5" X 8.25" X 10.75"

95



NEW GENERATION® SERVERS

The New Generation Server has become the product of choice among restaurant chains and health care providers for good reason. The ABS faceted construction offers an unparalleled strength-to-weight ratio. And with 15 color and size combinations, they match nearly every decor. Constructed in the USA from BPA free plastic with foam insulation for a temperature retention of 2-3 hours. Features a push button top and optional brew-thru and take-apart lids, sold separately.

- | | | |
|--|---|--|
| <p>① 0.6 Liter (20 oz.)
6" X 7.75" X 7.75"</p> <ul style="list-style-type: none"> ■ NG501BL □ NG501WH ■ NG501BU ■ NG501AL ■ NG501GR | <p>② 1 Liter (33.8 oz.)
4.5" X 5.75" X 9.5"</p> <ul style="list-style-type: none"> ■ NG101BL □ NG101WH ■ NG101BU ■ NG101AL ■ NG101GR | <p>③ 2 Liter (67.6 oz.)
5.25" X 7" X 11"</p> <ul style="list-style-type: none"> ■ NG421BL □ NG421WH ■ NG421BU ■ NG421AL ■ NG421GR |
|--|---|--|

replacement parts: regular lid, decaf lid, brew-thru lid





Eco-Serv™

ECO-SERV™ CARAFE

Designed in 1998, our Eco-Serv™ Carafe became a classic coffee service companion in diners and healthcare settings everywhere. Constructed in the USA from BPA-free plastic with foam insulation for a temperature retention of 2–3 hours and available in 2 sizes and 5 classic colors for a server that's versatile enough for nearly any application. Ideal for any beverage service in restaurants, hospitals, board rooms and more. Features a push button top and snap-on decaf indicator.

① 0.6 Liter (20 oz.)
4.75" X 6.75" X 8"

- ECO6BL
- ECO6WH
- ECO6LA
- ECO6BSC
- ECO6SLG

② 1.3 Liter (44 oz.)
5.75" X 7.75" X 9.75"

- ECO13BL
- ECO13WH
- ECO13LA
- ECO13BSC
- ECO13SLG

replacement parts: lid, decaf indicator/tab



97

METALLIC LUSTER

DURABILITY WITHOUT COMPROMISE

The Metallic Luster Carafe features double-walled foam insulation that retains hot or cold temperatures for 2–3 hours. Because of the durability of its BPA-free plastic construction, the Metallic Luster is a great server for high-traffic areas. A metallic chrome powder coating on the exterior plastic shell gives this plastic carafe a distinctive look.



ML101CH/BL
1 Liter (33.8 oz.)
4" X 6" X 9.25"

replacement parts: lid (regular, decaf), gasket

COFFEE AT A TOUCH

LONG-LASTING HEAT, EASY DISPENSING

Our HPS Coffee at a Touch Carafe features an ergonomic push button lid for easy dispensing and a metal flap on the spout for a more controlled pour. A clear coat finish eliminates fingerprints and water spots. 1.9-liter size is available with a brew-thru lid.



replacement parts: lid (regular, decaf, brew-thru), gasket, liner



HPS101
1 Liter (33.8 oz.)
5.25" X 7" X 10.5"



HPS161
1.6 Liter (54 oz.)
5.25" X 6.25" X 13.5"



HPS191
1.9 Liter (64.2 oz.)
6" X 7" X 12"



CLASSIC CARAFE

DRIPLESS SERVICE FOR THE WIN!

Our Classic Carafe is ideal for table service. It's constructed with a stainless-steel exterior and a glass or stainless vacuum interior that holds hot and cold temperatures for extended periods. The dripless spout and tamper proof stopper lid make it a safe and simple addition to your beverage service.

GLASS LINED, STAINLESS EXTERIOR



CGC060CP

0.6 Liter (20 oz.)
5" X 6.5" X 8.75"

CGC060SS

0.6 Liter (20 oz.)
5" X 6.5" X 8.75"

CGC101CP

1 Liter (33.8 oz.)
4.5" X 6.25" X 10"

CGC101CSS

1 Liter (33.8 oz.)
4.5" X 6.25" X 10"

STAINLESS LINED, STAINLESS EXTERIOR



CGCS10CP

CGCS10SS

1 Liter (33.8 oz.)
4.5" X 6.25" X 10"

Classic Carafe

replacement parts: lid (regular, decañ), lid stopper, gasket, liner

ALPHA CARAFE

WHEN GLASS AND PLASTIC COME TOGETHER

The Alpha Carafes combine the long-lasting heat retention of a glass vacuum liner with an economical polypropylene plastic body, for a durable server fit for restaurants, health care and more. A well-designed push button top allows for easy, one-handed operation, making it a practical solution for busy beverage service.



replacement parts: lid (regular, decaf, brew-thru), gasket, liner



ALPH10BL
1 Liter (33.8 oz.)
7.75" X 5.5" X 11.25"



ALPH10WH
1 Liter (33.8 oz.)
7.75" X 5.5" X 11.25"

101

SLIM WATER PITCHER



DOUBLE WALL? NO SWEAT!

The small footprint of our Double Wall Slim Pitcher makes it easy to fit multiples in small spaces. The double wall exterior eliminates condensation. Featuring a thin rubber over molded handle for easy transportation and pouring for wait-staff. Available in brushed (BS) or polished (PS) stainless steel.



DOUBLE WALLED, WITH ICE GUARD



X7DWBS

1.6 Liter (54 oz.)
4" X 7" X 9.75"
Brushed Stainless



X7DWPS

1.6 Liter (54 oz.)
4" X 7" X 9.75"
Polished Stainless

SIMPLE ELEGANCE

Featuring the slim silhouette of our new double wall version, this single walled slim is as classy as they come and is now available in six finishes—brushed (BS), polished (PS), vintage gold (VG), rose gold (RG), dark tungsten (DT), and black onyx (BX)—to complement a variety of decors and styles.



SINGLE WALLED, WITH ICE GUARD



X7025
X7025BS (pictured left)
1.9 Liter (64.2 oz.)
4" X 7" X 9.75"

X7025BSVG
X7025BSRG
X7025BSDT
X7025BSBX

SINGLE WALLED, NO ICE GUARD



X7025NG (pictured left)
X7025NGBS
1.9 Liter (64.2 oz.)
4" X 7" X 9.75"

103

BELL WATER PITCHER



Our Bell Pitcher is a must-have for water service. It has a distinctive round bell shape with a thick handle making it easy to carry and pour. Constructed from brushed 18/8 stainless steel and with a built-in ice guard. New double wall version prevents condensation. Available in six finishes—brushed (BS), polished (PS), vintage gold (VG), rose gold (RG), dark tungsten (DT), and black onyx (BX).



WE'RE SEEING DOUBLE!

DOUBLE WALLED, BRUSHED STAINLESS,
WITH ICE GUARD



WPB2BSDW
1.3 Liter (44 oz.)
5.7" X 8.5" X 9.5"
Brushed Stainless

THE ORIGINAL BELLE OF THE BALL

SINGLE WALLED



WPB2BSNG
2 Liter (66.6 oz.)
5.75" X 8" X 9.25"
No Ice Guard
Brushed Stainless



WPB2BS
2 Liter (66.6 oz.)
5.75" X 8" X 9.25"
With Ice Guard
Brushed Stainless

- WPB2BSVG
- WPB2BSRG
- WPB2BSDT
- WPB2BSBX

2 Liter (66.6 oz.)
5.75" X 8" X 9.25"
With Ice Guard
Metallic Elements

105

VESI PITCHER

Named after the Finnish translation of water, the new Vesi Water Pitcher is designed for effortless water service. A thick, ergonomic handle makes carrying and pouring optimal and a built-in ice guard eliminates splashing and spills during table service.



VESIWPBS

2 Liter (67.7 oz.)
6.5" X 4.25" X 10.5"
Brushed Stainless
w/ Ice Guard



ALTUS PITCHER

The Altus Water Pitcher has a silhouette that coordinates perfectly with our Altus Carafes found on page 66. With a unique shape unlike any other pitcher on the market, this stainless-steel pitcher will add distinctive style to your table service.



ALTUWPBS

2 Liter (67.7 oz.)
6.5" X 5" X 11"
Brushed Stainless
No Ice Guard



FOAM-LINED PITCHERS

Versatile and simplistic in design, our WP Carafes feature a flip-top lid and foam insulation in a variety of sizes. This carafe is great for hot or cold beverages and is ideal for custom etching (see page 146). Reliable, no-condensation pitchers are a must for restaurants, meetings, room service and conferences. Available in satin (SA) or chrome (CH) finishes.



■ WP6SA
0.6 Liter (20 oz.)
4" X 4.75" X 8"



■ WP1SA
■ WP1CH
1 Liter (33.8 oz.)
4.5" X 6" X 8.25"



■ WP15SA
■ WP15CH
1.5 Liter (50.7 oz.)
4.75" X 6.25" X 10.5"



■ WP20SA
2 Liter (67.6 oz.)
5.25" X 6.25" X 10.75"

ICE TUBE PITCHERS

Our Ice Tube Pitchers are constructed from BPA-free SAN and MS plastics, giving them good clarity and durability. Available in multiple sizes and shapes—smooth, ribbed, and bell—that all share the same lid and ice tube core. Mix and match for a fun variety on your tables or choose one style for a more uniform look.



replacement parts: lid, ice tube, infuser tube/ice strainer

ADD THE PERFORATED INFUSER TUBE FOR CUSTOM DRINKS!

BPA-FREE MS STYRENE PLASTIC



MWP19SB
Smooth Body 1.9
Liter (64.2 oz.)
5" X 6.75" X 10.5"



MWP30SB
Smooth Body
3 Liter (101.4 oz.)
6.5" X 8" X 11.25"



MWP33RB
Ribbed Body
3.3 Liter (111.5 oz.)
6.5" X 7.5" X 11.25"



AWPINF
Infuser Tube
1.75" X 1.75" X 6.75"

BPA-FREE SAN PLASTIC



SWP19SB
Smooth Body 1.9
Liter (64.2 oz.)
6" X 6.75" X 10.5"



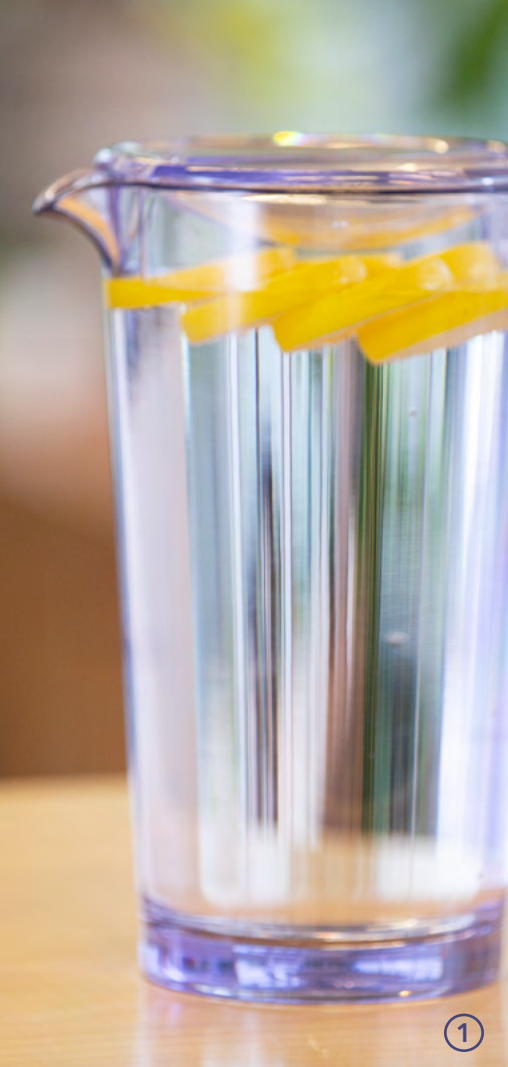
SWP24SB
Bell Body
2.4 Liter (81.1 oz.)
6.25" X 7.5" X 11.5"



SWP33RB
Ribbed Body
3.3 Liter (111.5 oz.)
6.75" X 7.75" X 11.5"



SWP33SB
Smooth Body
3.3 Liter (111.5 oz.)
6.75" X 7.75" X 11.5"



① STANLEY® CLEAR PITCHER

The Clear Pitcher from Stanley® Commercial features an odor and stain resistant body made from BPA free materials and features a 0.25" thick wall to eliminate sweating. Great for water, beer, juice and other cold beverages. Pour through plastic lid is included. Replacement lid available.



10-00403-000
1.9 Liter (64.2 oz.)
5.5" X 8.5" X 9.75"

② WATERWAY CARAFE

Our Waterway Carafe is a resealable plastic water bottle, great for serving water and juices at the table for guests to help themselves through dinner. This carafe offers the clarity of a glass bottle with the durability of SAN plastic. Sealed with a liquid-tight lid to keep contents fresh and covered from contaminants.



NB51PO
1.5 Liter (50.7 oz.)
4.25" X 4.25" X 13.25"

③ FLAVOR INFUSION

Enjoy flavor-infused water with this Service Ideas Flavor Infusion clear beverage pitcher, featuring an infuser core to quickly create new drinks with the addition of fruits, citrus wedges, and herbs. Great for restaurants, hotels, spas, and other food service applications.



NEPH02-1
1.9 Liter (64.2 oz.)
4.5" X 6.5" X 11"

replacement parts: lids

PLASTIC PITCHERS



④ SCULPTURED ICE™

The stackable Sculptured Ice™ Pitcher is constructed of BPA-free SAN plastic with a distinctive wavy pattern. It comes with a clear, pour-through lid. These pitchers are scratch resistant and dishwasher safe, making them ideal for both formal and casual setting. The lid and no-drip spout minimize spills, and the sculptured horizontal swirl pattern provides extra grip.



SI2LITCL

1.9 Liter (64.2 oz.)
5.5" X 8.5" X 9.75"

⑤ 3-WAY PITCHER

The classic design of the PCP60 3-Way Pour Pitcher is great for a variety of beverages such as beer, water and soda. It features a divot in the handle to provide a more controlled pour when using the side spouts for dispensing. Constructed entirely of a BPA-free Tritan™ co-poly blend to give it extra clarity. NSF listed.



PCP60V2

1.7 Liter (60 oz.)
5.75" X 7.25" X 8.75"



FROTHING PITCHERS

FOR SPECIALTY COFFEE DRINKS

Our Frothing Pitchers are constructed from 18/8 stainless steel and available in four sizes. Complete with embossed measurements visible on the inside and outside, and a hole above the handle to rest a thermometer, this frothing pitcher works great for creating specialty lattes and cappuccinos.



FROTH206
0.6 Liter (20 oz.)
3.5" X 5.5" X 4.25"



FROTH326
0.95 Liter (32 oz.)
4" X 6" X 5"



FROTH506
1.5 Liter (50.7 oz.)
4.5" X 6.75" X 6"

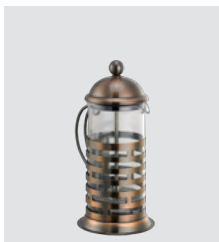


FROTH646
1.9 Liter (64.2 oz.)
4.75" X 7.5" X 6.5"

SINGLE WALL BRICK PRESS



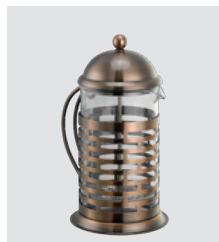
The Brick Press from Service Ideas is made from 18/8 stainless steel and features a Pyrex® glass liner. Named after its "brick pattern" on the outside of the glass, which adds eye appeal and protection from the hot glass liner. For best results, warm body before brewing to prevent cracking. Hand wash the lid and screen mechanism for maximum longevity



■ T277B
■ T277BRNZ
0.35 Liter (11.8 oz.)
3.5" X 4.5" X 7.75"



■ T477B
■ T477BRNZ
0.6 Liter (20 oz.)
4.25" X 5.75" X 8.5"



■ T677B
■ T677BRNZ
0.8 Liter (27 oz.)
4.75" X 6" X 9"



■ T877B
■ T877BRNZ
1 Liter (33.8 oz.)
4.75" X 6" X 9.75"

113

DOUBLE WALL FRENCH PRESSES



STAINLESS STEEL

Constructed of 18/8 stainless steel and features a replaceable 3-piece screen system. The ergonomic handle and knob on lid create an effortless brew and comfortable pour. Great for loose leaf teas as well as coffee. Double-wall construction keeps the exterior cool to the touch while the coffee stays warm inside. The body is dishwasher safe, while the lid and screen mechanism should be hand washed. Available in a brushed (BS) or polished (PS) stainless finish.



CLEAR GLASS

Our Double Wall Glass Press gives a stunning presentation through the transparent all-glass body, giving a clear view of the spiraling coffee grounds as it brews—a great way to end an elegant meal. Double-wall construction keeps the exterior cool to the touch while the coffee stays warm inside. The three-part screen allows this press to be used for coffee, tea, or craft cocktails. Hand wash the screen and parts to extend the life of your press.



DOUBLE WALL STAINLESS PRESS



■ PDWSA350BS
■ PDWSA350PS
0.4 Liter (13.5 oz.)
3" X 5.25" X 6.5"



■ PDWSA800BS
■ PDWSA800PS
0.8 Liter (27 oz.)
3.5" X 6" X 7.5"



■ PDWSA1000BS
■ PDWSA1000PS
1 Liter (33.8 oz.)
4.25" X 7" X 8.5"

DOUBLE WALL GLASS PRESS



T299SR
0.4 Liter (13.5 oz.)
6.25" X 4.5" X 5.5"



T499SR
0.6 Liter (20 oz.)
6.5" X 4.5" X 6.75"



T899SR
1 Liter (33.8 oz.)
6.75" X 4.5" X 8.5"

HOW TO USE A FRENCH PRESS



FOR HOT COFFEE OR TEA:

1. Place the assembled press on a level surface. Hold the press firmly, grasp the knob on the lid and remove the mesh filter assembly.
2. Pre-heat the body with hot tap water. Let sit for 1–2 minutes and drain.
3. Fill body with the appropriate amount of medium to coarse ground coffee or tea leaves. Use 2–3 tsp. for 6–8 ounces of water, depending on preferred strength.
4. Fill the remainder of the press with 198°–200° F hot water. Do not fill to the brim! Leave a small space at the top for the lid.
5. Place the lid, mesh, and filter assembly on top. Steep for 3–5 minutes depending on preferred strength.
6. After the coffee grounds/tea settles to the bottom, “press” the mesh filter down slowly to avoid splashing hot coffee/tea. Serve in warmed cups, drink immediately.

FOR COLD BREW COFFEE:

1. Place the assembled press on a level surface. Hold the press firmly, grasp the knob on the lid and remove the mesh filter assembly.
2. Fill body with the appropriate amount of medium to coarse ground coffee. We recommend using about 8–10 tablespoons of coarse coffee grounds per liter.
3. Fill the remainder of the press with cold water, leaving just enough room for the lid to fit on top. We suggest mixing the grounds and water, so everything is fully saturated.
4. Place the lid, mesh, and filter assembly on top of the press and let brew in your fridge for anywhere between 12–24 hours, depending on your strength preference.
5. “Press” the mesh filter down slowly to avoid splashing and spilling. Serve as is over ice or add cream, sugar, and other flavorings for a specialty drink.
6. Refrigerate cold brew concentrate for up to seven days.

117

CERAMIC TEAPOTS

Made with food-safe ceramics, our Ceramic Teapots come in all sorts of different shapes and sizes. Give guests a classy display for self-service tea. Perfect for loose leaf tea and keeping it warm. After the first cup of tea is poured, the brew basket sits above the water so you don't over-steep your tea. Available in black (BL) and white (WH) finishes.



ROUND

- TPC10BL
- TPC10WH

0.3 Liter (10 oz.)
3" X 6" X 3"

- TPC16BL
- TPC16WH

0.47 Liter (16 oz.)
3" X 6.25" X 3"

OVAL

- TPCV16BL
- TPCV16WH

0.47 Liter (16 oz.)
4.5" X 7" X 4.25"

replacement parts: lids



WASHINGTON

- TPCW16BL
 - TPCW16WH
- 0.47 Liter (16 oz.)
3.75" X 6.5" X 4.5"



ENGLISH

- TPCE16BL
 - TPCE16WH
- 0.47 Liter (16 oz.)
4.5" X 7.25" X 4.25"

DOUBLE WALL PLASTIC TEAPOT

INSULATED PLASTIC BODY

Introduced in 1982, our Plastic Teapots are one of the original plastic teapots. Made in USA and constructed from ABS plastic with double wall insulation so heat won't transfer as quickly. Available in 6 classic colors with or without a tether.



TETHER



0.35 Liter (16 oz.)
3.5" X 6.5" X 6"

- TST612AL
- TST612BL
- TST612BU
- TST612FG
- TST612ST/BR
- TST612WH

NO TETHER



0.35 Liter (16 oz.)
3.5" X 6.5" X 6"

- TS612AL
- TS612BL
- TS612BU
- TS612FG
- TS612ST/BR
- TS612WH

replacement parts: lid, tether

TEA TIME STAINLESS TEAPOT

A ball-like shaped tea pot in two convenient sizes, with a polished finish. The perfect teapot for after dinner dessert, coffee, and tea! Ergonomically designed with an long handle to keep your knuckles from touching the hot exterior while hot. Pairs perfectly with our Tea Time Cream and Sugar set.



SINGLE WALLED TEAPOTS, POLISHED STAINLESS



TT07SS

0.7 Liter (24 oz.)
6.25" X 4.75" X 5.5"



TT12SS

1.2 Liter (40.5 oz.)
8.25" X 5.75" X 6.5"

replacement parts: lid



TEA TIME SUGAR AND CREAMER SET WITH TRAY

STCCRSGTRC

7.5" X 4.25" X 4"

121

SPECIALTY TEA



DOUBLE WALL STAINLESS TEAPOT

The Double Wall Stainless Teapot is great for keeping your tea warm! Featuring a decorative knob and ergonomic handle for a comfortable and clean pour.



TSDW350SS

0.35 Liter (12 oz.)
5" X 4.75" X 7"



BEECHWOOD TEA BOXES

An ideal accompaniment to any tea service. Our beechwood Tea Boxes are finished with a modern black finish and windowed top. Available in 6 or 12 compartment sizes to keep your teas neat and tidy.



TB006

6 Compartment
8.5" X 7.25" X 3"

TB012

12 Compartment
11" X 10.5" X 3"



TEA BALL

Our Tea Ball has a look you would recognize anywhere with a glass liner and an asymmetric plastic outer shell. Brew your favorite loose-leaf tea in the removable tea basket. Comes with a handy portion spoon.



TB600CC

0.6 Liter (20 oz.)
4" X 6" X 5.25"



CLASSIC TEA PRESS

For the freshest cup of tea, brew your favorite loose tea in our Classic Tea Press. Watch your coffee or tea steep through the glass exterior and simply lock it into the top of the lid when it's done. Replacement liner available.



T600CC

0.6 Liter (20 oz.)
3.5" X 5.5" X 4.25"

1 2 3

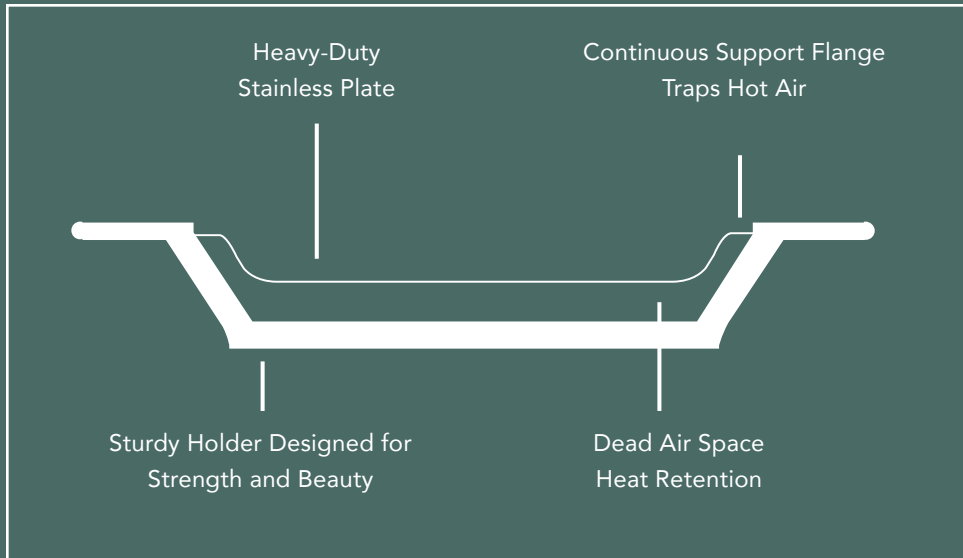
SELL THE SIZZLE

Seventy-three years ago, we carried out the first sizzling plate of food on our patented Thermo-Plate® Platters. Table service has never been the same. This lightweight and versatile serving tool is designed to insulate your food without causing it to lose its integrity. Now, hot foods stay steamy hot, and cold foods stay chilled—even through dinner conversation.

Lightweight polyester holder provides strength and durability and can greatly reduce replacement costs of broken china. Continuous support flange traps hot air, sturdy holder designed for strength and durability, dead air space for heat retention. Add butter, oil, or water to the hot insert and watch it sizzle!

- Lightweight construction for easy transporting
- Continuous support flange traps hot air
- Insulated to keep hot food hot, and cold food cold
- Made in the USA





Original Holders: OT11BL, LO12BL
 Original Inserts: OT11SS, LO12SS
 Half Inserts: LO125SS



Oval Holders: RO117BL, RO128BL
 Oval Inserts: FP1/RO117SS, FP1/RO117AL, RO128SS



Round Holders: RT7BL, RT701BL, RT10BL, RT1025BL
 Round Inserts: RT7SS, RT10SS, RT1025SS
 Oyster Inserts: RTO10SS



Fish Holders: FB1BL
 Fish Inserts: FP1/RO117SS, FP1/RO117AL

See index for pricing on individual holders and inserts.

125

THERMO-PLATE® SOLUTIONS



ORIGINAL

A rounded rectangle shape that works great for main courses. Use the divided half plates for combinations of hot and cold presentations.

OT11BLC
(OT11BL + OT11SS)
8" X 12.5" X 1.25"
Stainless Plate, Full

LO12BLC
(LO12BL + LO12SS)
14" X 9.5" X 1"
Stainless Plate, Full

LO125BLC
(LO12BL + LO125SS)
14" X 9.5" X 1"
Stainless Plate, Half



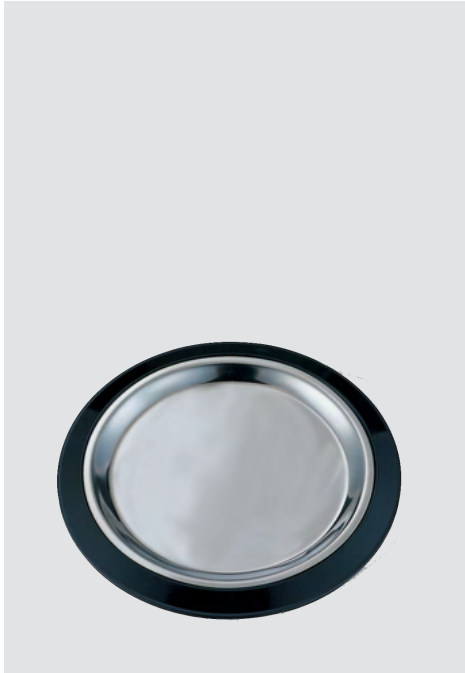
OVAL

An oval shape, available with or without handles, great for main courses. Use the handled version (pictured above) when you need extra gripping support.

RO117BLC
(RO117BL + FP1/RO117SS)
13.75" X 8.5" X 1.25"
Stainless Plate, Handles

RO117BLAC
(RO117BL + FP1/RO117AL)
13.75" X 8.5" X 1.25"
Aluminum Plate, Handles

RO128BLC
(RO117BL + FP1/RO128SS)
11.75" X 10" X 1.25"
Stainless Plate, Rounded



ROUND

In a variety of sizes, the round shape works well for side dishes and appetizers. Add the oyster insert plate to serve up oysters on the half-shell.

RT7BLC
(RT7BL + RT7SS)
9.5" X 9.5" X 1.25"
Stainless Plate, Small Sloped

RT701BLC
(RT701BL + RT7SS)
9.5" X 9.5" X 1.25"
Stainless Plate, Small

RT10BLC
(RT10BL + RT10SS)
12" X 12" X 1.25"
Stainless Plate, Large

RT1025BLC
(RT1025BL + RT1025SS)
12.25" X 12.25" X 1.25"
Stainless Plate, X-Large



FISH

Our oval inserts set in a unique seafood themed shape. Use this fish-shaped platter for your seafood entrées and appetizers.

FP1BLC
(FP1BL + FP1/RO117SS)
14.25" X 9.75" X 1.25"
Stainless Plate

FP1BLAC
(FP1BL + FP1/RO117AL)
14.25" X 9.75" X 1.25"
Aluminum Plate

HOT SOLUTIONS™ PLATTERS

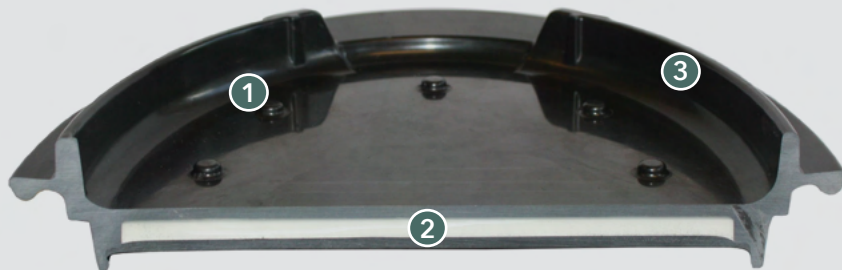
SIZZLING SKILLET

Designed to withstand temperatures of up to 500°F, the lightweight insulation of the original Hot Solutions™ Platter ensures that your table stays cool, but the food stays hot. Completely dishwasher safe and lasts four times longer than traditional wood platters.

- ① Continuous support flange traps hot air
- ② Inner core traps heat at 200°F
- ③ Lightweight insulation keeps platter cool to the touch



HS13 CUT AWAY SHOWING CERAMIC CORE





HS15BL2
Small Round
9.25" X 9.25" X 0.75"



HS13BL3
Large Oval
10" X 7.5" X 0.75"

129

HOT SOLUTIONS™ BIRCHWOOD

Customers will respond to the warmth and beauty of these natural birchwood platters and the waitstaff will appreciate the ease and lightweight service that Hot Solutions™ Birchwood Skillets provide.

replacement parts: platters, skillets



SK107BHC
Birch & Alum Skillet
Set
9" X 12" X 1"



SK107BH
Birch Holder
12" X 7" X 7"



JUST THE SKILLETS



SK10CI
Oval Cast Iron
10" X 7.5" X 0.75"



SK107CA
Aluminum w/Handle
14.75" X 7.5" X 0.75"



SK10CIH
Cast Iron w/Handle
15.25" X 7.5" X 0.75"



PUSH FOR SERVICE LIGHT

Impress your guests with the perfect balance of attentive but not overwhelming service with the Service Ideas **Push-for-Service Light**. The perfect addition for restaurants, coffee shops, and other service-oriented hospitality businesses. Simply set the light on tables to create an easy way for guest to signal service is needed. With just a simple push of a button, your server will be visually alerted that attention is required.

- LED light bulb activated by a button switch at the top and powered by two standard AAA batteries (not included)
- Constructed of durable plastic with a weighted base to keep it from toppling over during service
- Designed with a small footprint to easily fit among dinnerware and décor



PFSBLK

8" X 3" X 3"

131

SERVE WITH STYLE

NON-SLIP REMOVABLE INSERT TRAYS

The Non-Slip Round Tray is a great serving tool for bars and restaurants. Its removable rubber insert allows for versatility. Add the insert to create a non-slip surface that keeps glasses and plates from sliding during service, or take it out and replace with a doily for an appetizer plate presentation. Trays are stackable for neat and organized storage. Constructed from 18/8 stainless steel and black silicone rubber.



ORIGINAL ROUND



replacement parts: rubber insert

TR119RI
11" X 11" X 1"
Inside: 9" X 9"
Brushed Stainless

TR1412RI
14" X 14" X 1"
Inside: 12" X 12"
Brushed Stainless

TR1614RI
16" X 16" X 1"
Inside: 14" X 14"
Brushed Stainless



DOUBLES AS AN ELEGANT
COCKTAIL OR CHECK TRAY

SMALL RECTANGLE

TR137RI

13.5" X 7.5" X 0.75"

Inside: 11" X 5"

Brushed Stainless

133

GLAMOROUS METALLICS

METALLIC ELEMENTS ROUND TRAYS

replacement parts: rubber insert



DARK TUNGSTEN

TR119RIDT

11" X 11" X 1"
Inside: 9" X 9"

TR1412RIDT

14" X 14" X 1"
Inside: 12" X 12"

TR1614RIDT

16" X 16" X 1"
Inside: 14" X 14"



VINTAGE GOLD

TR119RIVG

11" X 11" X 1"
Inside: 9" X 9"

TR1412RIVG

14" X 14" X 1"
Inside: 12" X 12"

TR1614RIVG

16" X 16" X 1"
Inside: 14" X 14"



ROSE GOLD

TR119RIRG

11" X 11" X 1"
Inside: 9" X 9"

TR1412RIRG

14" X 14" X 1"
Inside: 12" X 12"

TR1614RIRG

16" X 16" X 1"
Inside: 14" X 14"



BLACK ONYX

TR119RIBX

11" X 11" X 1"
Inside: 9" X 9"

TR1412RIBX

14" X 14" X 1"
Inside: 12" X 12"

TR1614RIBX

16" X 16" X 1"
Inside: 14" X 14"



LAIID-BACK NATURALS

replacement parts: rubber insert



NATURAL ELEMENTS ROUND TRAYS



TR1412RILW
14" X 14" X 1"
Inside: 12" X 12"
Light Wood



TR1412RIWM
14" X 14" X 1"
Inside: 12" X 12"
White Marble



TR1412RIDW
14" X 14" X 1"
Inside: 12" X 12"
Dark Wood

135

NON-SLIP SILICONE SURFACE TRAYS

BUILT-IN PROTECTION FROM SPILLS AND SLIPS

Combining the beauty of stainless steel with the non-slip qualities of silicon rubber, our Silicone Surface Trays feature a molded-in grip, giving it a non-slip top and bottom that will help keep your drinks upright during even the busiest cocktail hour. Completely dishwasher safe and stackable for convenient cleaning and storage.



ORIGINAL ROUND



TR119SR

11" X 11" X 1"
Inside: 9" X 9"
Brushed Stainless

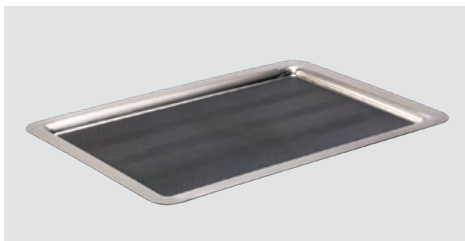
TR1412SR

14" X 14" X 1"
Inside: 12" X 12"
Brushed Stainless

TR1614SR

16" X 16" X 1"
Inside: 14" X 14"
Brushed Stainless

LARGE RECTANGLE



TRRT2014SR

20.5" X 14.75" X 1.5"
Inside: 20" X 14"
Brushed Stainless

ELEGANT STAINLESS SERVING TRAY

MAKE IT EXTRA SPECIAL

Our Stainless Rectangle Tray is a great serving tool for hotel and buffet service. It has a traditional design with ergonomic handles for easy and comfortable transportation. Add a doily for a beautiful appetizer plate presentation or for room service. Constructed from 18/8 stainless steel with a brushed finish.



STAINLESS RECTANGLE



TRRTH2012BS
20.75" X 12.5" X 2.75"
Inside: 20" X 12"
Brushed Stainless

137

MOD18 SERVING PIECES

FLIP TO PAGE 150-151 FOR MORE
COORDINATING MOD18 TABLETOP
ACCESSORIES!



BREAD BASKETS



Our contemporary Mod18 fruit and bread baskets are made with heavy gauge stainless steel. The airy design allows you to view contents at the bottom of the baskets. Each basket can be nested inside one another for convenient storage. Great for bread, fruit, mints, and more! Available in brushed (SB) or polished (SM) stainless steel.

■ SB-75
■ SM-75

6.5" X 6.5" X 2.5"
Small

■ SB-64
■ SM-64

9" X 9" X 3.5"
Medium

■ SB-63
■ SM-63

12" X 12" X 3.75"
Large

BREADSTICK HOLDER



Use the coordinating Mod18 Breadstick Holder for breadsticks, coffee stir sticks, utensils, and more! Available in brushed (SB) or polished (SM) stainless steel.

■ SB-70
■ SM-70

3.5" X 3.5" X 6"
Breadstick

RECTANGULAR SERVING TRAYS



Available in narrow, medium, and large rectangle sizes. These heavy-duty stainless-steel trays feature contoured handles to create a comfortable grip and sleek look. Available in brushed (SB) and polished (SM) stainless steel.

■ SB-41
■ SM-41

20.5" X 6.5" X 0.25"
Narrow

■ SB-43
■ SM-43

16.5" X 13.5" X 0.25"
Medium

■ SB-42
■ SM-42

20.75" X 11.5" X 0.25"
Large

139



①

① STANDARD WIRE BASKETS

Perfect for more than just bread! Use them to hold warm hand towels for your guests after their meal has finished for a lovely presentation at the end of a great meal. Constructed from 18/8 polished stainless steel with a weighted base.

■ WBR7PS
7" X 7" X 3.5"

■ WBR9PS
8.5" X 8.5" X 3.75"

■ WBBO9PS
9" X 7" X 3.5"



②

② CORNUCOPIA WIRE BASKET

The Cornucopia Wire Basket is great for fresh fruit, bagels, or even simple decorations. This basket can stand up tall or lay on its side for a unique presentation. Constructed from 18/8 polished stainless steel.

■ BKTA
11.75" X 10" X 11.5"



③ WAVE WIRE BASKETS

With a contemporary wave design, these round baskets create an eye-catching display on your table, great for breads, napkins, and fruits. Constructed from 18/8 brushed stainless steel.

■ WBRW7BS
7" X 7" X 3.5"

■ WBRW9BS
9" X 9" X 3.75"

MULTI-PURPOSE WIRE BASKETS



④ OVAL WIRE BASKET

The redesigned Oval Wire Basket is perfect for more than just bread. Use them for fruit, pastries, or use it to hold warm hand towels for your guests; it's a lovely presentation at the end of a great meal. Constructed from 18/8 polished stainless steel.

■ BKWI

12.75" X 7.5" X 4"

⑤ BREADSTICK WIRE BASKET

Our breadstick wire basket also doubles as great napkin or silverware holder for an elegant and tidy table display. Constructed from 18/8 polished stainless steel with a weighted base.

■ WBB5PS

3.5" X 3.75" X 5"

141

THE ESSENTIAL PARTY GUESTS



DOUBLE WALL PARTY TUB

LARGE PARTY TUB

Party on with our double wall insulated beverage tub. Its large 14.5-inch opening can fit almost an entire case of beer, water or soda, to keep chilled at your next event. And since it's double walled, you don't have to worry about it sweating in the heat and creating a messy puddle to clean up. Constructed of 18/8 stainless steel with a brushed finish to reduce fingerprints.

■ PT7BS

7 Gallon (896 oz.)
16.5" X 16.5" X 10"

PERSONAL PARTY TUB

No party? No problem. Enjoy a six pack on ice with a close friend or two with our new Personal Party Tub. Great for a six pack of beer or a couple bottles of champagne. Available in classic brushed (BS) stainless, as well as our metallic elements finishes; vintage gold (VG), rose gold (RG), and dark tungsten (DT).

■ PT2BS

2 Gallon (192 oz.)
11" X 11" X 6"

Metallic Elements

■ PT2BSVG

■ PT2BSRG

■ PT2BSDT

PERSONAL PARTY SIZE AVAILABLE
IN THREE METALLIC FINISHES

143



BAR & WINE ESSENTIALS

WINE CHILLERS AND WINE OPENER CORKSCREW

Raise the bar with our Stainless-Steel Wine Chillers. Constructed with double-wall insulation, eliminating condensation on the outside of the chiller, so it can be left on the table for customers and guests—even in warm, outdoor settings.



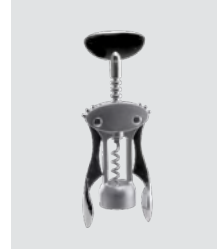
WC1
4.75" X 4.75" X 7.75"
Brushed
No Bands



WC2MBBS
4.75" X 4.75" X 7.75"
Brushed
Polished Bands



WC2LBPS
4.75" X 4.75" X 7.75"
Polished
Brushed Bands



CSCRM2S
3" X 1.5" X 8"
Brushed

ICE BUCKETS

replacement parts: lid, drain, tongs



IB13BS

1.3 Liter (44 oz.)
7" X 5.75" X 6.75"



IB3BS

3 Liter (101.4 oz.)
9" X 7.5" X 9"

ROUND

Enhance your presentation with this elegant Stainless Ice Bucket—available in two great sizes. Featuring ergonomic ring handles that make it easy to carry and handle. Complete with drain tray and tongs in an attractive brushed stainless finish with polished accents.

SQUARE

The Square Ice Bucket has a distinctive design that looks great on bars and in hotel rooms. It features an attractive flat lid and rounded knob.

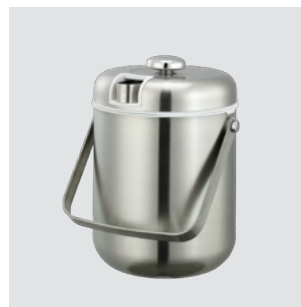


IBSQ3BS

3 Liter (101.4 oz.)
6" X 6" X 8"

WITH TONGS

The IBT Ice Bucket with Tongs is a great little fill-and-go ice bucket. It includes a pair of tongs and a convenient storage area within the lid.



IBT15BS

1.5 Liter (50.7 oz.)
6" X 6" X 8"

PLASTIC

Made of ABS plastic and has a double wall insulation to keep your ice longer and eliminate condensation. Portable and great for larger quantities of ice.



IB3BL

3 Liter (101.4 oz.)
9.25" X 6.25" X 9.25"



145

SHAKERS & CADDIES

Mix and match shakers. Available with mesh, teardrop, standard and multi-hole tops, these shakers can be as versatile as you need in easy-to-clean stainless-steel construction. Shakers come unprinted, or in printed words: Vanilla, Nutmeg, Cinnamon, Powdered Sugar, Cocoa. Add the shaker caddies for easy access counter-top storage.



replacement parts: shaker plug



PLAIN STAINLESS SHAKERS



STC3 – 3-Hole Top
STC7 – 7-Hole Top
STCMULTI – Multi-Hole Top
STCTEAR – Teardrop Top
STCMESH – Mesh Top
1.0 Liter (33.8 oz.)
2" X 2" X 5.5"

ETCHED STAINLESS SHAKERS



STC7VANILLA – Vanilla, 7-Hole Top
STCMULTICINN – Cinnamon, Multi-Hole Top
STCTEARCOCOA – Cocoa, Teardrop Top
STCMESHNUTM – Nutmeg, Mesh Top
STCMESHPSUGR – Powdered Sugar, Mesh Top
1.0 Liter (33.8 oz.)
2" X 2" X 5.5"



3-Hole Top



7-Hole Top



Multi-Hole Top



Teardrop Top



Mesh Top

SHAKER CADDIES



STOH2V2
2 Compartment
5.5" X 2.75" X 7.5"



STOH4
4 Compartment
7.25" X 7.25" X 8.25"

CREAM & SUGAR ACCESSORIES



TEA TIME CREAM & SUGAR SET

A charming addition to any coffee or tea service. Its elegant, polished finish adds luxury to any dining table, giving your guests a first-class experience. Pair with our Tea Time Teapots found on page 113.

■ STCCRSGTRC

5 oz. Cream,
4 oz. Sugar
7.5" X 4.25" X 4"

CREAM & SUGAR CADDY SET

Set out the perfect sugar & creamer combo. This polished stainless caddy paired with our 4 oz Sugar Stick Holder and Creamer set creates a perfectly portable duo. Available in original brushed stainless as well as four new Metallic Elements finishes; Vintage Gold (VG), Rose Gold (RG), Dark Tungsten (DT), and Black Onyx (BX).

- STCCRSG4
- STCCRSG4VG
- STCCRSG4RG
- STCCRSG4DT
- STCCRSG4BX

4 oz. Cream,
4 oz. Sugar
5.75" X 2.75" X 7.5"





SUGAR & CREAMER SET

Sugar and Creamer Set, 8 oz each. 18/8 stainless steel body with a chrome plated plastic lid. Body is dishwasher safe. Sold as a set or separately.

■ SSC85

8 oz. Cream,
8 oz. Sugar
5" X 3.5" X 4.75"



PLASTIC SUGAR PACKET HOLDERS

Finish off the table setting with versatile black plastic holders. Designed to accommodate sugar packets, these holders can also be used to serve butter patties, cream and jelly packets.

SPH5BL

Large
5" X 2.75" X 2.25"

SPH3BL

Small
2.5" X 3" X 3.5"

MOD18 ACCESSORIES

**FLIP TO PAGE 139 FOR
MATCHING MOD18 BASKETS
AND TRAYS!**

The Mod18 collection offers a variety of table accessories constructed of 18/8 stainless steel with a unique perforated design. Each item is available in a brushed or polished finish and is dishwasher safe. Use them together to create a signature style or mix and match them with your existing look to add a modern touch.



MOD18 TRIPLE SNACK BOWL

This three-compartment Snack Bowl is great for nuts, small snacks, and dried fruit. A comfortable silicone handle makes it easy to move around. Each bowl has a 3.25" diameter and is 2.5" tall. Available in brushed (SB) and polished (SM) stainless steel.

■ SB-72

■ SM-72

7.5" X 4.25" X 4"



MOD18 SUGAR STICK HOLDER

This Sugar Stick Holder comfortably fits about 25 standard sugar sticks. It could also double as a chopstick holder. Perforated steel construction coordinates with the other Mod18 Tabletop Pieces. Available in brushed (SB) and polished (SM) stainless steel.

- SB-60
- SM-60

2" X 2" X 3"



MOD18 SUGAR PACKET HOLDER

The Rectangular Sugar Packet Holder fits close to 20 sugar packets. It also makes a great presentation for business cards or after dinner mints. Available in brushed (SB) and polished (SM) stainless steel.

- SB-61
- SM-61

3.5" X 2.5" X 2.25"

151

SYRUP SAVER™ & CADDY

replacement parts: lids



PLASTIC SYRUP SAVER™

Our 10 oz. Syrup Saver™ Dispenser is new and improved for better control when dispensing syrup. The body and unique lid with rocker are made from BPA free material. The rockers easily snap into the lid so you can customize them with color and flavors without having to replace the whole lid.



SR10BLC
0.3 Liters (10 oz.)
2.75" X 4.5" X 5.5"
Black

COPPER SYRUP CADDY

Store your Syrup Saver Dispensers in this retro Copper Syrup Caddy. It can also double as storage for jams, creamers and butter packets.



SRC4CP
12.5" X 4" X 3"
Copper

CLASSIC SYRUP DISPENSERS

PLASTIC SYRUP DISPENSERS

With their uniform look and performance, these dispensers work well in restaurant chains. Available in 3 classic colors for differentiating flavors. Cleaning is made easy with a removable lid.

replacement parts: lids



0.47 Liters (16 oz.)
3" X 4.25" X 5.75"

\$12.50

- SY916WH
- SY916BL
- SY916AL

153

CUSTOMIZE YOUR BEVERAGEWARE



PRICING & MOQs

Visit our website for more information on pricing and MOQs at serviceideas.com/customization



PAD PRINTING AND ETCHING

Many of our products can be crested with pad printing or etching. Every product has a different print area and placement. Reach out to our customer service team to discuss which method is best for your product.

- Step 1:** Select Product
- Step 2:** Select Quantity
- Step 3:** Select Print Area
- Step 4:** Select Cresting Method
- Step 5:** Send Camera Ready Artwork

CUSTOM WRAP PROGRAM

Our custom wraps work great on airpots, thermal containers, and beverage dispensers. It's a great way to stand out and build your brand identity. Every product requires a different dieline. Contact customer service to request a dieline for your custom artwork.

- Step 1:** Select Product
- Step 2:** Select Quantity
- Step 3:** Design Your Wrap
- Step 4:** Send Camera Ready Artwork



155

INDEX

Service Ideas 2023 product index. **Bold text = New product and line expansions**

BUFFET

Coffee Urns & Gravity Pots 14-19

Flame Free™ Thermo-Urn™	14
Universal Thermal Containers	16
Slim Line Thermal Containers	18

Cold Beverage Dispensers 20-39

Stainless Tea Urns	20
Clear Tea Urn	21
Square Infusion Dispenser	22
Elite Beverage Dispensers	24
Double Wall Dispenser	26
Essential Beverage Dispensers	28
Cold Brew 'N' Serv™	30
Classic Beverage Dispensers	32

Buffet Accessories 34-35

Laser-Cut ID Signs	34
Laser-Cut ID Tents	34
Drip Trays	35

Ze Pé Trolleys & Buffet 36-39

Ze Pé Trolleys	36
Ze Pé Buffet	38

AIRPOTS

Insulated Airpots 40-53

Eco-Air® Glass-Lined Airpots	40
Eco-Air® Slim Stainless Airpots	42
Eco-Air® Lids	43
Signa-Air Airpots	44
Color-Me SVAC	46
SteelVac™ Airpots	48
Stanley® Commercial Airpots	50
Lock 'N' Carry Airpots	52

Airpot Displays 54-61

Airpot Cover-Ups	54
Stainless ID Chains	55
Build-Your-Own Airpot Rack	56
Plastic Roto Rack™	58
Combo Airpot Stations	59
Wire Airpot Racks	60
Modular Airpot Stands	61
Condiment Caddies	61

SERVERS

Elite Servers 62-73

Nicollet Flip-Top Carafe	62
Marquette Flip-Top Carafe	62
Natural Elements Carafe	64
Nicollet Push-Button Carafe	66
Marquette Push-Button Carafe	66
Metallic Elements Carafe	67
Altus Carafes	68
Smart Choice Server	70
Stainless Square Server	71
Classy™ Carafes	72

Essential Servers 74-91

Flow Control Carafes	74
Slim Servers	76
Stainless Touch	77
SteelVac™ Creamers - Original	78
SteelVac™ Creamers - White Top	80
SteelVac™ Essential Carafe	82
SteelVac™ Slim Carafe	83
SteelVac™ Screw-Top Carafe	83
Portion Control Server	84
Stanley® Commercial Carafes	90

Carafe Accessories 85

Flavor Bands	85
--------------	----

Brew-Thru Carafes & Decanters 86-88

Brew & Pour® Carafe	86
Classic Clear Decanter	88
Stainless Vacuum Decanter	88

Beer Growlers 89

Thermo-Craft® Growler	89
-----------------------	----

Classic Servers 92-101

Thermo-Serv® Carafe	92
Twist 'N' Serv™ Carafe	94
New Generation® Servers	96
Eco-Serv™ Carafe	97
Metallic Luster	98
Coffee-At-A-Touch Carafe	99
Classic Carafe	100
Alpha Carafe	101

SERVERS (CONTINUED)

Stainless Water Pitchers 102-107

Double Wall Slim Pitcher	102
Original Slim Pitcher	103
Metallic Elements Slim Pitcher	103
Double Wall Bell Pitcher	104
Original Bell Pitcher	104
Metallic Elements Bell Pitcher	104
Vesi Pitcher	106
Altus Pitcher	106
Foam-Lined Stainless Pitcher	107

Plastic Water Pitchers 108-111

Ice Tube Pitchers	108
Waterway Carafe	110
Flavor Infusion	110
Stanley® Clear Pitcher	110
Sculptured Ice™	111
3-Way Pitcher	111

Specialty Coffee Supplies 112-115

Frothing Pitchers	112
Brick Press	113
Double Wall Stainless Press	114
Double Wall Glass Press	114

Tea Supplies 118-123

Ceramic Teapots	118
Double Wall Plastic Teapot	120
Tea Time Stainless Teapot	121
Tea Time Sugar & Creamer Set	121
Double Wall Stainless Teapot	122
Beechwood Tea Boxes	122
Tea Ball	123
Classic Tea Press	123

TABLETOP

Insulated Platters & Skillets 124-130

Thermo-Plate® Platters	124
Hot Solutions™ Platters	128
Hot Solutions™ Skillets	130

TABLETOP (CONTINUED)

Table Service Lights 131

Push-for-Service Light	131
------------------------	-----

Bar Trays 132-139

Non-Slip Removable Insert Trays	132
Metallic Elements Trays	134
Natural Elements Trays	135
Non-Slip Silicone Surface Trays	136
Elegant Stainless Serving Tray	137
Mod18 Serving Trays	139

Baskets 138-141

Mod18 Bread Baskets	139
Mod18 Breadstick Basket	139
Standard Wire Baskets	140
Cornucopia Wire Basket	140
Wave Wire Baskets	140
Oval Wire Basket	141
Breadstick Wire Basket	141

Bar & Wine 142-145

Double Wall Party Tubs	142
Double Wall Wine Chillers	144
Commercial Corkscrew	144
Double Wall Ice Buckets	145

Coffee Condiment Accessories 146-149

Shakers & Caddies	146
Tea Time Cream & Sugar Set	148
4 oz Cream & Sugar Caddy Set	148
8oz Sugar & Creamer Set	149
Plastic Sugar Packet Holders	149

Table Accessories 150-153

Mod18 Triple Snack Bowl	150
Mod18 Sugar Stick Holder	151
Mod18 Sugar Packet Holder	151
Syrup Saver™ & Caddy	152
Classic Syrup Dispensers	153

PRODUCT CUSTOMIZATION 154-155

PRICING

For more information on pricing, parts, and availability, call customer service toll free at **1-800-328-4493** or visit our website **www.serviceideas.com**.

TERMS & CONDITIONS

Terms and conditions apply to products listed in the 2023 catalog and on the Service Ideas website.

TERMS

1% interest 10 days from date on invoice, net 30 days. Accounts showing balances owing past 60 days will be placed on credit hold and charged 1% interest per month. Orders may be paid by MasterCard, Visa or American Express at receipt of invoice. Credit card orders are not eligible for cash discount. Any orders paid by credit card later than 10 days from invoice date may be subject to a 3% handling fee.

FREIGHT

Orders totaling 0-\$150 net will be charged \$15.00 for shipping and handling. Orders totaling \$151-\$2,999 net will be charged 10% of merchandise total for shipping and handling. Single orders, within the continental United States, that exceed \$3,000 net will be shipped freight prepaid.

BROKEN CASES

All products are sold in standard packing cartons only as listed in the price list. Any order calling for less than standard pack will be charged \$8.00 NET PER CASE.

CREDIT

Orders placed by buyers without established credit with Service Ideas, Inc. must be accompanied by check, credit card, or credit application. Initial orders for open credit status must meet a minimum net total of \$500. Orders will ship as soon as possible after credit has been approved or regular check has cleared. Orders paid by cashier's check, MasterCard, Visa, American Express, certified check or money order will ship as soon as possible. Call 1-800-328-4493 for exact cash amounts or to request a credit application. We reserve the right to establish or refuse any business entity or individual as a customer.

SPECIAL ORDER ITEMS

A sign off will be required on our special order release form stating that the order will not be canceled or returned. Minimum order quantities are required.

PRICES

All prices in US dollars (\$) are subject to change without notice.

LOST AND DAMAGED SHIPMENTS

Risk of loss is buyer's upon delivery to carrier; therefore, whenever the seller shall deliver or cause to be delivered to a common carrier, any goods ordered by buyer, whether the particular common carrier shall have been designated in the shipping or routing instruction of buyer or not, seller shall not be responsible for any delays or damages in shipment and the common carrier to which the seller shall deliver goods shipped to buyer is hereby declared to be the agent of the buyer. All shortages or damages must be reported within 48 hours to the carrier and Service Ideas. Secure an inspection report from the carrier. Concealed damage not reported to Service Ideas within 30 days of delivery will not be eligible for credit.

RETURNS

By definition, returns are any merchandise sold by Service Ideas, Inc. that is to be returned to the factory. Stocked product returns within 6 months of invoice date are **NOT SUBJECT TO A RESTOCKING CHARGE**. Returns received 6-12 months of invoice date or related to overstock are subject to restocking charges, not to exceed 20%. No returns will be accepted after 12 months. Prepaid dropship orders will be subject to restocking fees. All returns to be restocked must be complete case packs, received in the unopened original cartons and merchandise must be current, standard catalog items. We are unable to accept returns of obsolete, special order, custom or crested products. No merchandise will be accepted for return without prior authorization. All returns must be freight prepaid. To receive authorizations please call 1-800-328-4493 and provide the following information:

- Company name, address, phone number
- Exact carton count
- Original invoice number and purchase order number
- Reasons for return
- Exact quantity and model numbers

SERVICE IDEAS WARRANTY

Products noted with warranty symbol are warranted against manufacturer defects for specified years. As a manufacturer of fine products, Service Ideas, Inc. is interested in knowing about any problems you may experience. We will work with you individually to determine if the problem is caused by a manufacturer's defect.

CARE & HANDLING

HANDLING

For optimal retention, remove or flip open lid and preheat server with warm water. Empty contents and refill with hot beverage. Secure lid closure. Varying factors that effect temperature are content levels, topping off, and open lids. Servers should not be heated in a microwave, contain boiling water or liquids at temperatures above 200 degrees.

CLEANING

For optimal care, servers should be hand washed with mild detergents.

Exterior: Wipe with a soft, damp cloth, followed with a dry cloth.

Interior: Clean with luke warm water and mild detergent and

rinse with hot water. Never submerge in water.

Never clean plastic servers with vinegar as it will be absorbed by the material and leave a vinegar taste.

For glass lined servers, to avoid damage never clean a with a brush, and avoid chemical detergents.

For push button lids, depress button and flush water through. Push button lids are not dishwasher safe.

For stainless steel products listed dishwasher safe, use only high-temp dishwashers that don't use chemicals that will erode the stainless steel.

STORAGE

All products are best stored in a cool, dry place away from heat sources.

FREQUENTLY ASKED QUESTIONS

DO YOU SELL REPLACEMENT PARTS?

Yes. 95% of our products have replacement parts available. Check online at www.serviceideas.com.

WHAT'S YOUR RETURN POLICY?

Returns within 6 months are not subject to restocking charges. Anything after 6 months will be subject to restocking charges not to exceed 20%. No merchandise that is discontinued will be accepted for return without prior authorization. Please call 1-800-328-4493 to receive your RMA #.

WHAT'S SHIPPING LEAD TIME?

All in-stock orders are shipped within 48 hours. Non-stock and custom items are shipped within 8-12 weeks

HOW LONG DOES TEMPERATURE HOLD IN PLASTIC?

Anywhere from 2-3 hours

HOW LONG DOES TEMPERATURE HOLD IN STAINLESS VACUUM?

Anywhere from 4-6 hours

HOW LONG DOES TEMPERATURE HOLD IN GLASS?

Anywhere from 6-8 hours

DO YOU HAVE A WARRANTY?

Service Ideas is interested in knowing about any problems you may experience. We will work with you individually to determine if the problem is caused by a manufacturer's defect.

CAN I REQUEST ANOTHER CATALOG?

Yes. E-mail Service Ideas at literature@serviceideas.com or call 1-800-328-4493.

CAN I COOK ON THE THERMO-PLATE STAINLESS INSERT?

No. To prevent warping, stainless and aluminum plates should never be subjected to an open flame.

CAN YOU PUT HOT BEVERAGES IN THE ZE PÉ DISPENSERS?

The Ze Pé beverage dispensers are meant for only cold beverages. Do not put hot beverages in the dispensers.

WHAT IS CAMERA READY ARTWORK?

We accept high resolution digital artwork (300 dpi or higher) in an Illustrator, .eps, .tif or .jpg format.

- 300 DPI resolution is the minimum requirement for pad printing
- 600 DPI resolution is the preferred requirement for etching

NOTE: Service Ideas is not able to modify logos or art.

DO YOU TAKE CREDIT CARDS?

Yes. We accept VISA, MasterCard and American Express.

HOW DO I PLACE AN ORDER?

Simply e-mail us at orders@serviceideas.com or log on to our website at www.serviceideas.com.

FOODSERVICE REPS

PLEASE CALL AHEAD AND SET UP A SHOWROOM APPOINTMENT

2 **ELLSWORTH MARKETING & ASSOCIATES**

Alabama, Georgia, Arkansas, Louisiana, Mississippi & Tennessee
678-691-8104 Fax 678-691-8105

- 1001-1101 Kermit Dr. Suite 109
Nashville, TN 37217
- 3157 Presidential Dr. #203
Atlanta, GA 30340

3 **TABLETOP DOGZ**

Florida
941-377-9507

4 **CLV MARKETING**

New York & North New Jersey
631-694-7170 Fax 631-964-7243

- 43-01 22nd St., Suite 534
Long Island City, NY 11101

5 **MIDWEST ASSOCIATES**

Michigan (Exclude Upper Michigan)
586-263-1229 Fax 586-263-6055

- 27186 Parkview Blvd
Warren, MI 48071

6 **GABRIEL GROUP**

Indiana, Kentucky & Ohio
616-583-9720 Fax 616-583-9720

- 1523 Republic Street, Unit 101
Cincinnati, OH 45202
- 8501 Bash Street, Suite 1300
Indianapolis, IN 46250

7 **CAROLINA FOODSERVICE SOLUTIONS**

North Carolina & South Carolina
919-518-0873

- 11125 Treynorth Dr.
Cornelius, NC 28031

9 **MIRKOVICH & ASSOCIATES, INC.**

Northern Illinois & East/S. East Wisconsin
630-792-0080 Fax 630-792-9914

- 1064 N. Garfield St.
Lombard, IL 60148
- 1501 Paramount Dr., Suite D
Waukesha, WI 53186

10 **PREFERRED SOURCE**

Oklahoma & Texas (Excludes El Paso)
214-912-7713 Fax 214-855-5297

- 9925 Circle Dr.
Austin, TX 78736
- 3440 Sojourn Bldg. 2, Suite 225
Carrollton, TX 75006
- 4231 Bellaire Blvd. Suite N
Houston, TX 77025

11 **DALY & DeROMA GROUP**

Minnesota, North Dakota, South Dakota,
Western Wisconsin & Upper Michigan
763-583-8080 Fax 763-543-8181

- 18200 45th Ave No, Ste C
Plymouth, MN 55446

12 **CREBTIVE HOSPITALITY SOLUTION**

Southern Illinois, Iowa, Kansas, Missouri
& Nebraska
913-764-5558 Fax 913-764-8668

- 1805 E. 123rd St.
Olathe, KS 66061
- 2121 January Ave.
St. Louis, MO 63110

13 **AJ SALES, LTD.**

Lower Nevada (Las Vegas)
702-468-1499

14 **AVISION/CURATE SALES GROUP**

Arizona, Colorado, New Mexico, Texas (El
Paso), Montana, Idaho, Utah & Wyoming
303-373-1940 Fax 303-371-1557

- 7070 E. Indian School Rd.
Scottsdale, AZ 85251
- 4665 Joliet St.
Denver, CO 80239

16 **CYMCO SALES & MARKETING**

Southern California
582-619-3660

17 **THE ACTION GROUP**

Northern California & Nevada
800-670-9824 Fax 952-957-6256

- 2608 9th St. Suite 201
Berkeley, CA 94710

18 **RHI**

Alaska, Idaho, Montana, Oregon &
Washington
425-251-0531 Fax 425-251-0543

- 5628 Airport Way S., Suite 250
Seattle, Washington 98108

20 **4TOP HOSPITALITY SOLUTIONS**

Connecticut, Maine, Massachusetts, New
Hampshire, Rhode Island & Vermont
781-257-2870

- 1005 Main St. Suite 8132
Pawtucket, RI 02860

21 **LAKE EFFECT FOODSERVICE SOLUTIONS**

Upstate New York
716-731-1736 Fax 518-252-6174

- 908 Niagara Falls Blvd.
North Tonawanda, NY 14120

22 **GABRIEL GROUP**

Western Pennsylvania
616-583-9720 Fax 616-583-9720

- 1523 Republic Street, Unit 101
Cincinnati, OH 45202

23 **HOSPITALITY DYNAMIC SOLUTIONS**

Maryland, Washington D.C., Delaware,
West Virginia & Virginia
202-251-1082

- 1422 Portner Road, Suite 9
Alexandria, VA 22314

24 **MAXWELL-MCKENNEY**

Southern New Jersey &
Eastern Pennsylvania
856-310-0700 Fax 856-310-0707

- 116 White Horse Pike
Haddon Heights, NJ 08035

26 **ALOHA IMPORTING**

Hawaii
808-988-4833 Fax 808-988-2629

871 **LES AGENCES DINCO, INC.**

Canada-Quebec & Eastern Provinces
514-697-8075 Fax 514-697-9478

- 16891 Hymus Blvd.
Kirkland, Quebec H9H 3L4

872 **TOTAL TABLETOP PLUS**

Canada-Ontario
905-607-4893 Fax 905-607-9836

- 15-3330 Ridgeway Dr.
Mississauga, ON L5L 5Z9

874 **JOE KRAWCZYK**

Canada-Alberta, Saskatchewan
651-379-3127

875 **WEISS WARES, LTD**

Canada-British Columbia
604-463-8141 Fax 604-477-8141

- GX Building
1868 Glen Drive, Unit #248
Vancouver, BC V6A 4K4

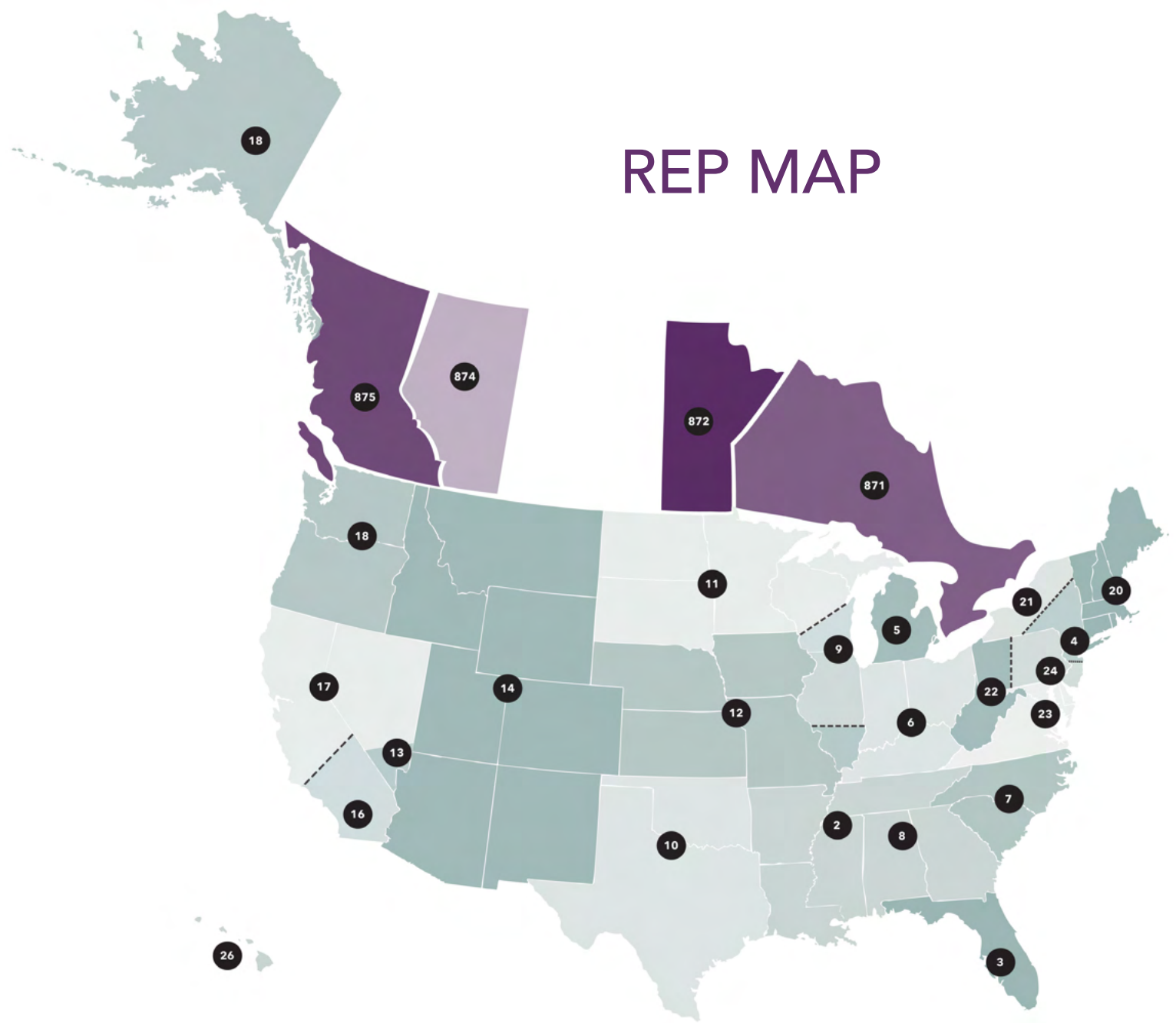
INTERNATIONAL

Keith Enscoe
502-905-8263

H.D. Sheldon & Company, Inc.
212-924-6920 Fax 212-627-1759

Greenfield World Trade
954-202-7336

REP MAP



OCS/COFFEE REPS

ALOHA IMPORTING

Hawaii
808-988-4833 Fax 808-988-2629

ABILITY REPS

New England (Connecticut, Maine, Massachusetts, New Hampshire, Rhode Island & Vermont)
978-281-2700

ALL OTHER AREAS NOT LISTED

Keith Enscoe
502-905-8263

PWA FOOD GROUP

Wisconsin, Illinois & Michigan
708-579-5567 Fax 708-579-3287

WEST COAST CONCEPTS

West Coast
714-747-2494 Fax 949-588-7883

RICHARD BLACK SALES

North Carolina, South Carolina, Georgia, Florida, Kentucky, Tennessee, Alabama & Mississippi
847-622-1803 Fax 770-329-3501

REPCO

Delaware, New Jersey, New York (Metro Area) & Eastern Pennsylvania
963-875-0049 Fax 963-875-0870



www.serviceideas.com
800-328-4493
cs@serviceideas.com

WOMEN
OWNED